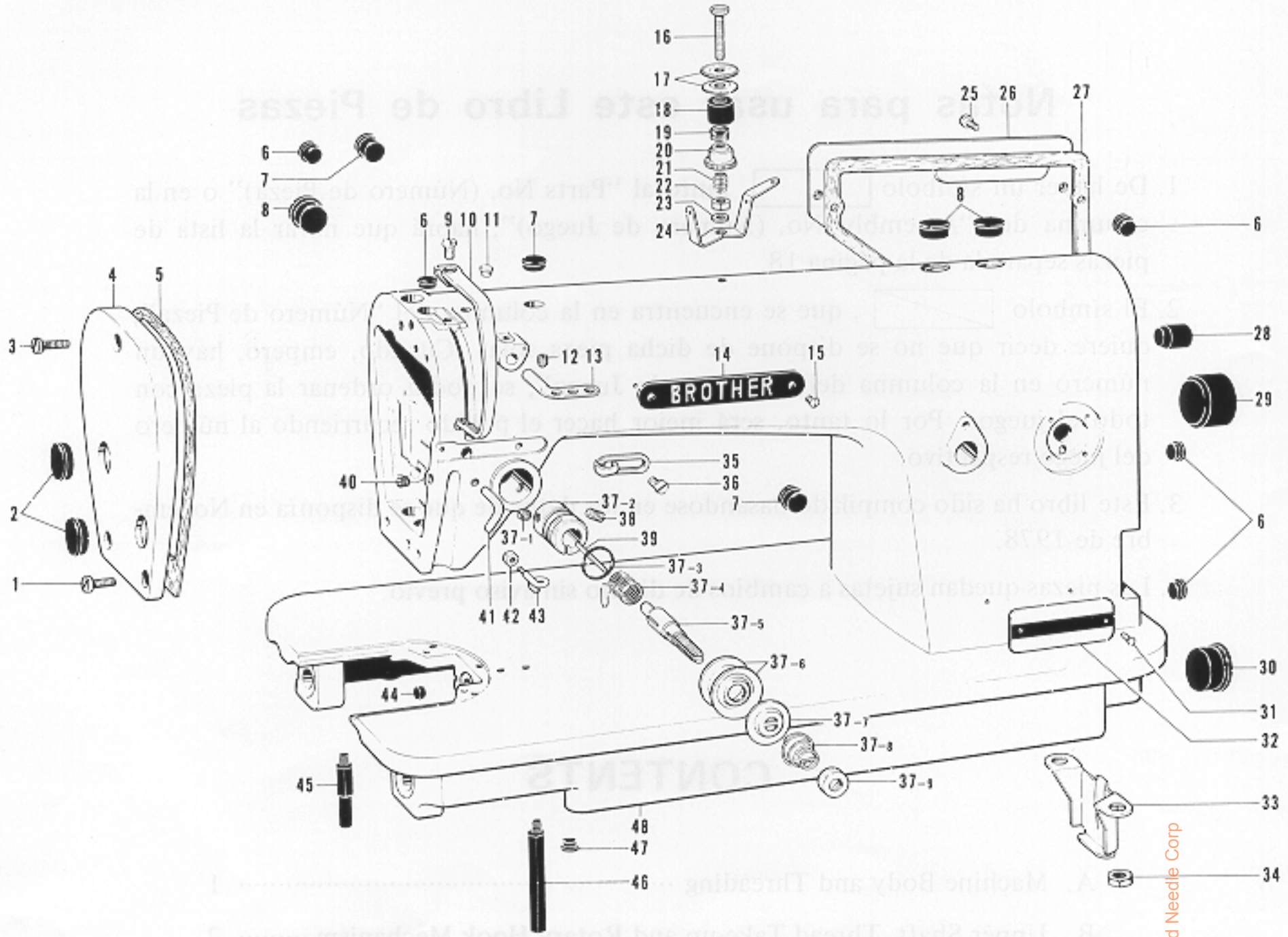
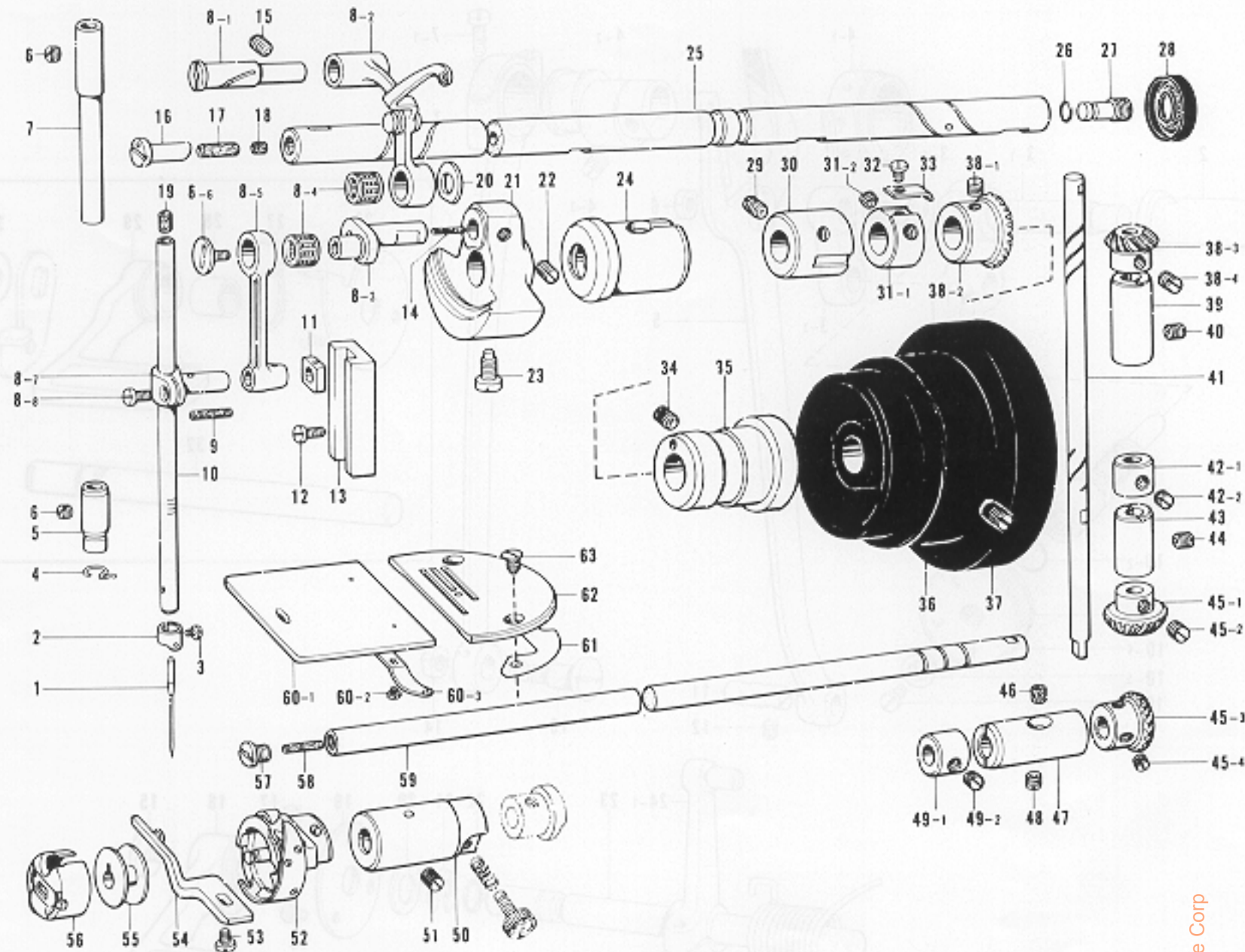


A. Machine Body and Threading



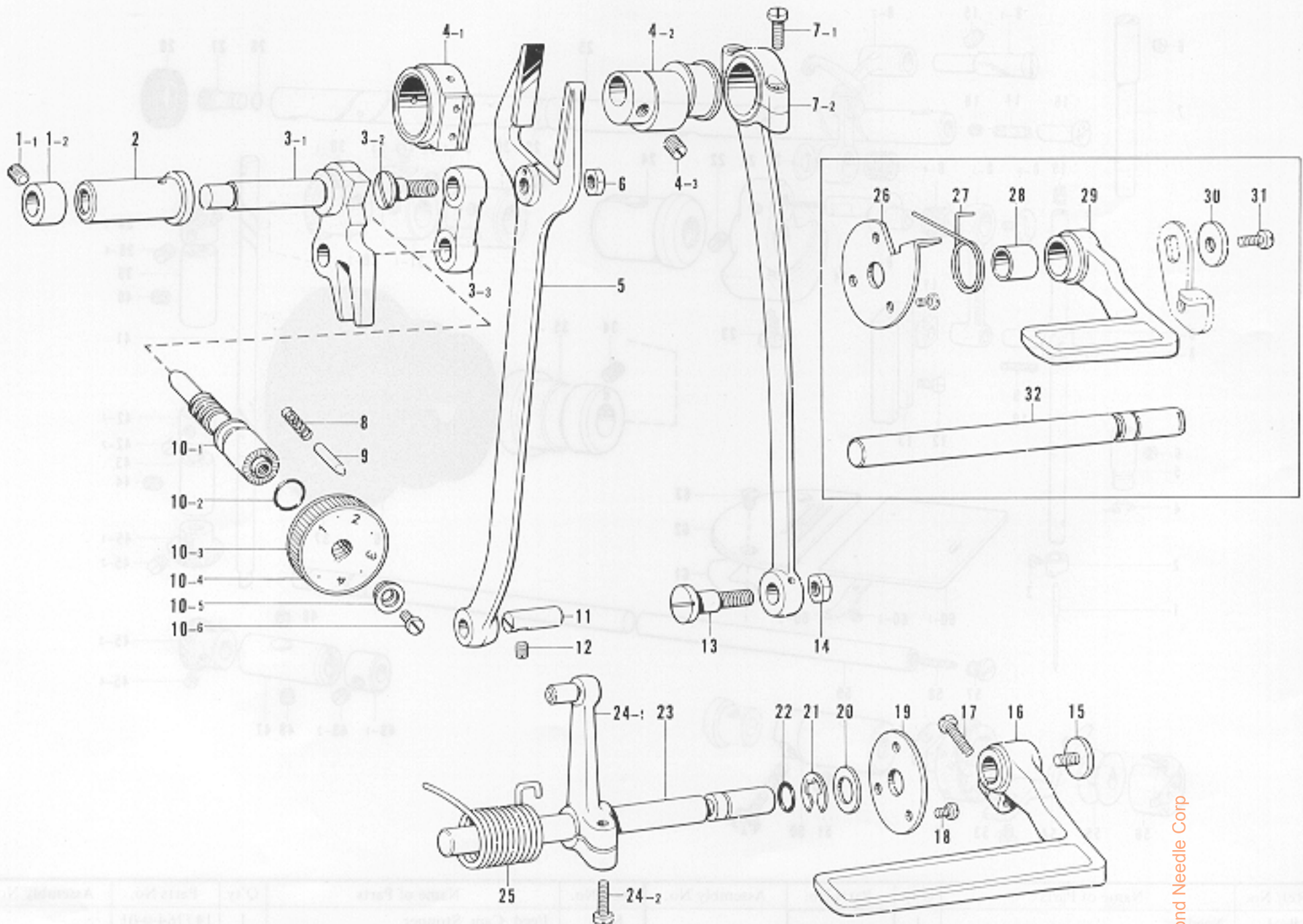
| Ref. No. | Name of Parts | Q'ty | Parts No. | Assembly No. | Ref. No. | Name of Parts | Q'ty | Parts No. | Assembly No. |
|----------|----------------------|------|-------------|--------------|----------|---------------------------------|------|-------------|--|
| A-1 | Screw | 2 | 009671-0-13 | | A-29 | Oil Cap | 1 | 104451-0-01 | |
| A-2 | Oil Cap | 2 | 104449-0-01 | | A-30 | Oil Cap | 1 | 108520-0-01 | |
| A-3 | Screw | 1 | 009671-8-13 | | A-31 | Model Plate Pin | 2 | | |
| A-4 | Face Plate | 1 | | | A-32 | Model Plate | 1 | | |
| A-5 | Packing | 1 | 145527-0-00 | | A-33 | Pump Cover | 1 | 145454-0-01 | |
| A-6 | Vinyl Cap | 5 | 104450-0-01 | | A-34 | Nut | 2 | 100090-0-04 | |
| A-7 | Oil Cap | 3 | 104821-0-01 | | A-35 | Thread Guide | 1 | 145522-0-01 | |
| A-8 | Oil Cap | 3 | 104449-0-01 | | A-36 | Screw | 1 | 009670-6-14 | |
| A-9 | Screw | 1 | 009680-7-13 | | A-37-1 | Screw | 1 | 100402-0-04 | A-37 Tension Regulator Assembly |
| A-10 | Thread Take-up Cover | 1 | 140885-0-02 | | A-37-2 | Upper Tension Regulator Bracket | 1 | 144741-0-01 | |
| A-11 | Oil Cap | 1 | 111865-0-01 | | A-37-3 | Packing | 1 | 114294-0-01 | |
| A-12 | Screw | 1 | 151602-0-02 | | A-37-4 | Thread Take-up Spring | 1 | 145519-0-01 | |
| A-13 | Thread Retainer | 1 | 114931-0-01 | | A-37-5 | Tension Stud | 1 | 100398-0-01 | |
| A-14 | Name Plate | 1 | | | A-37-6 | Tension Disc | 2 | 145446-0-01 | |
| A-15 | Screw | 2 | | | A-37-7 | Tension Disc Washer | 1 | 100134-0-01 | |
| A-16 | Pre-Tension Stud | 1 | 146056-0-01 | | A-37-8 | Tension Spring | 1 | | |
| A-17 | Thread Guide Disc | 2 | 147705-0-01 | | A-37-9 | Nut | 1 | 100136-0-01 | |
| A-18 | Washer | 1 | 146206-0-01 | | A-38 | Screw | 1 | 103950-0-02 | |
| A-19 | Spring | 1 | 146058-0-01 | | A-39 | Tension Release Pin | 1 | 150551-0-00 | |
| A-20 | Nut | 1 | 146059-0-01 | | A-40 | Screw | 1 | 011711-4-12 | |
| A-21 | Spring | 1 | 146060-0-00 | | A-41 | Thread Guide | 1 | 116112-0-01 | |
| A-22 | Nut | 1 | 105234-0-01 | | A-42 | Nut | 1 | 021660-1-02 | |
| A-23 | Washer | 1 | 025680-2-34 | | A-43 | Arm Thread Guide | 1 | 145524-0-01 | |
| A-24 | Thread Guide Plate | 1 | 146055-0-01 | | A-44 | Cap | 1 | 142274-0-01 | |
| A-25 | Screw | 5 | 009670-8-12 | | A-45 | Bed Leg B | 1 | 104830-0-01 | |
| A-26 | Rear Cover | 1 | 145455-0-01 | | A-46 | Bed Leg A | 1 | 104829-0-01 | |
| A-27 | Packing | 1 | 145528-0-00 | | A-47 | Oil Cap | 1 | 104833-0-01 | |
| A-28 | Oil Cap | 1 | 104832-0-01 | | A-48 | Arm Bed | 1 | | |

B. Upper Shaft, Thread Take-up and Rotary Hook Mechanism



| Ref. No. | Name of Parts | Q'ty | Parts No. | Assembly No. | Ref. No. | Name of Parts | Q'ty | Parts No. | Assembly No. |
|----------|-----------------------------------|------|-------------|---|-------------------------------------|------------------------------|-------------|---|---|
| B-1 | Needle | 1 | | | B-33 | Feed Cam Stopper | 1 | 147764-0-01 | |
| B-2 | Thread Guide | 1 | 145944-0-01 | | B-34 | Screw | 1 | 013760-6-10 | |
| B-3 | Screw | 1 | 140553-0-01 | | B-35 | Upper Shaft Bushing Right | 1 | 145461-0-01 | |
| B-4 | Thread Guide | 1 | 145525-0-01 | | B-36 | Pulley | 1 | 148823-0-01 | |
| B-5 | Needle Bar Bushing | 1 | | | B-37 | Screw | 2 | 013761-4-10 | |
| B-6 | Screw | 2 | 100260-0-01 | | B-38-1 | Screw | 2 | 151606-0-01 | |
| B-7 | Needle Bar Bushing Upper | 1 | 111463-0-01 | | B-38-2 | Gear | 1 | | B-38 Bevel Gear Upper Assembly 140378-0-01 |
| B-8-1 | Stad | 1 | | B-8 Thread Take-up Lever Assembly | B-38-3 | Gear | 1 | | |
| B-8-2 | Thread Take-up Supporter Assembly | 1 | | | B-38-4 | Screw | 2 | 151606-0-01 | |
| B-8-3 | Needle Bar Crank | 1 | | | B-39 | Vertical Shaft Upper Bushing | 1 | 142708-0-00 | |
| B-8-4 | Needle Bearing | 2 | | | B-40 | Screw | 1 | 013760-6-10 | |
| B-8-5 | Needle Bar Crank Rod | 1 | | | B-41 | Vertical Shaft | 1 | 145516-0-01 | |
| B-8-6 | Screw | 1 | 145465-0-01 | | B-42-1 | Collar | 1 | | B-42 Collar 181995-0-01 |
| B-8-7 | Needle Bar Clamp | 1 | | | B-42-2 | Screw | 2 | 101706-0-03 | |
| B-8-8 | Screw | 1 | 140004-0-01 | | B-43 | Vertical Shaft Lower Bushing | 1 | 142709-0-00 | |
| B-9 | Wick | 1 | 108809-0-01 | B-44 | Screw | 1 | 013761-4-10 | | |
| B-10 | Needle Bar | 1 | | B-45-1 | Gear | 1 | | B-45 Bevel Gear Upper Assembly 140381-0-01 | |
| B-11 | Block for Needle Bar Guide | 1 | | B-45-2 | Screw | 2 | 151606-0-01 | | |
| B-12 | Screw | 2 | 009670-6-12 | B-45-3 | Gear | 1 | | | |
| B-13 | Needle Bar Guide | 1 | 145688-0-00 | B-45-4 | Screw | 2 | 151606-0-01 | | |
| B-14 | Felt | 1 | 145624-0-00 | B-46 | Felt | 1 | 107155-0-01 | | |
| B-15 | Screw | 1 | 013781-0-12 | B-47 | Lower Shaft Bushing Right | 1 | 104520-0-00 | | |
| B-16 | Oil Adjuster | 1 | 146333-0-01 | B-48 | Screw | 1 | 151607-0-01 | | |
| B-17 | Felt | 1 | 146327-0-01 | B-49-1 | Collar | 1 | | B-49 Collar 181995-0-01 | |
| B-18 | Wick | 1 | 107149-0-01 | B-49-2 | Screw | 2 | 101706-0-03 | | |
| B-19 | Needle Bar Cork | 1 | 111863-0-01 | B-50 | Lower Shaft Bushing Left | 1 | 118761-0-00 | | |
| B-20 | Washer | 1 | 110367-0-01 | B-51 | Screw | 1 | 151603-0-02 | | |
| B-21 | Thread Take-up Crank | 1 | 148965-0-00 | B-52 | Rotary Hook Assembly | 1 | | | |
| B-22 | Screw | 2 | 151606-0-01 | B-53 | Screw | 1 | 107407-0-03 | | |
| B-23 | Screw | 1 | 104464-0-01 | B-54 | Bobbin Case Holder Position Bracket | 1 | | | |
| B-24 | Upper Shaft Bushing Left | 1 | 145459-1-01 | B-55 | Bobbin | 1 | 100376-0-01 | | |
| B-25 | Upper Shaft | 1 | 147511-0-01 | B-56 | Bobbin Case Assembly | 1 | 148350-1-01 | | |
| B-26 | O Ring | 1 | 081002-6-70 | B-57 | Screw | 1 | 109173-0-01 | | |
| B-27 | Oil Screw Right for Upper Shaft | 1 | 104555-0-01 | B-58 | Felt | 1 | 145751-0-01 | | |
| B-28 | Oil Seal | 1 | 101487-0-00 | B-59 | Lower Shaft | 1 | 145517-0-01 | | |
| B-29 | Screw | 1 | 151604-0-01 | B-60-1 | Slide Plate | 1 | | B-60 Slide Plate Assembly 180018-0-01 | |
| B-30 | Upper Shaft Bushing Intermediate | 1 | 140726-0-00 | B-60-2 | Screw | 2 | 122771-0-01 | | |
| B-31-1 | Set Collar | 1 | | B-60-3 | Slide Plate Spring | 1 | 114561-0-01 | | |
| B-31-2 | Screw | 2 | 151606-0-01 | B-61 | Needle Plate Washer | 1 | | | |
| B-32 | Screw | 1 | 009670-4-12 | B-62 | Needle Plate | 1 | | | |
| | | | | B-63 | Screw | 2 | 100032-0-03 | | |

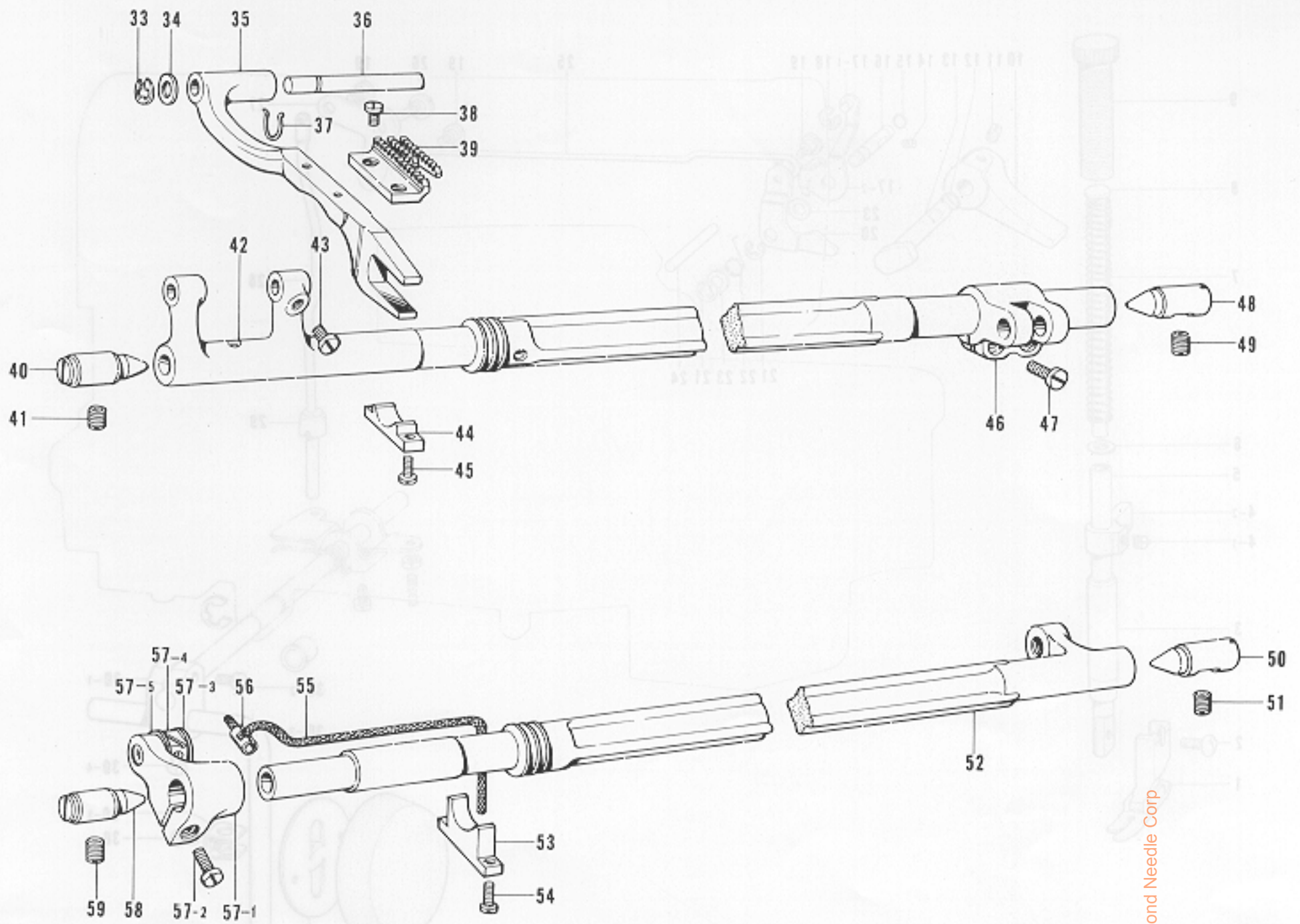
C. Feed Mechanism(Part 1)



| Ref. No. | Name of Parts | Q'ty | Parts No. | Assembly No. | Ref. No. | Name of Parts | Q'ty | Parts No. | Assembly No. |
|----------|------------------------------|------|-------------|--|----------|------------------------------|------|-------------|--|
| C- 1-1 | Screw | 1 | 100260-0-01 | C-1 Set Collar Assembly 181934-0-01 | C-12 | Screw | 1 | 151601-0-02 | |
| C- 1-2 | Set Collar | 1 | | | C-13 | Stud Screw 7.14 | 1 | 147509-0-01 | |
| C- 2 | Feed Regulator Shaft Bushing | 1 | 147500-0-00 | | C-14 | Nut | 1 | 104689-0-01 | |
| C- 3-1 | Feed Regulator | 1 | | C-3 Feed Regulator Assembly 147628-0-01 | C-15 | Screw | 1 | | |
| C- 3-2 | Screw | 1 | 145486-0-01 | | C-16 | Reverse Lever | 1 | | |
| C- 3-3 | Feed Link | 1 | 147502-0-00 | | C-17 | Screw Lever Plate | 1 | | |
| C- 4-1 | Feed Cam Sleeve | 1 | | C-4 Feed Cam Sleeve Assembly 147573-0-01 | C-18 | Screw | 3 | 007670-5-13 | |
| C- 4-2 | Feed Cam | 1 | | | C-19 | Reverse | 1 | | |
| C- 4-3 | Screw | 2 | 151604-0-01 | | C-20 | Washer | 1 | 025100-1-32 | |
| C- 5 | Feed Forked Connector | 1 | 109147-0-01 | | C-21 | Stop Ring | 1 | 048080-3-42 | |
| C- 6 | Nut | 1 | 104689-0-01 | | C-22 | Packing | 1 | 104564-0-01 | |
| C- 7-1 | Screw | 2 | 107428-0-01 | C-7 Crank Rod Assembly 145506-0-01 | C-23 | Reverse Lever Shaft | 1 | | |
| C- 7-2 | Crank Rod | 1 | | | C-24-1 | Lever Assembly | 1 | | C-24 Feed Regulator Lever Assembly 181935-0-01 |
| C- 8 | Spring | 1 | 100328-0-01 | | C-24-2 | Screw | 1 | 009711-4-12 | |
| C- 9 | Pin | 1 | 145502-0-01 | | C-25 | Spring | 1 | | |
| C-10-1 | Length Control Screw | 1 | 109151-1-01 | | C-26 | Reverse Lever Stopper | 1 | | |
| C-10-2 | Packing | 1 | 108549-0-01 | | C-27 | Reverse Lever Presser Spring | 1 | | |
| C-10-3 | Length Control Dial | 1 | 151320-0-01 | C-10 Length Control Assembly | C-28 | Collar | 1 | | |
| C-10-4 | Length Control Plate | 1 | | | C-29 | Reverse Lever | 1 | | |
| C-10-5 | Washer | 1 | 142746-0-02 | | C-30 | Washer | 1 | | |
| C-10-6 | Screw | 1 | 142747-0-02 | | C-31 | Screw | 1 | | |
| C-11 | Feed Rock Shaft Arm Pin | 1 | 109153-0-01 | | C-32 | Reverse Lever Shaft | 1 | | |

From the library of: Diamond Needle Corp

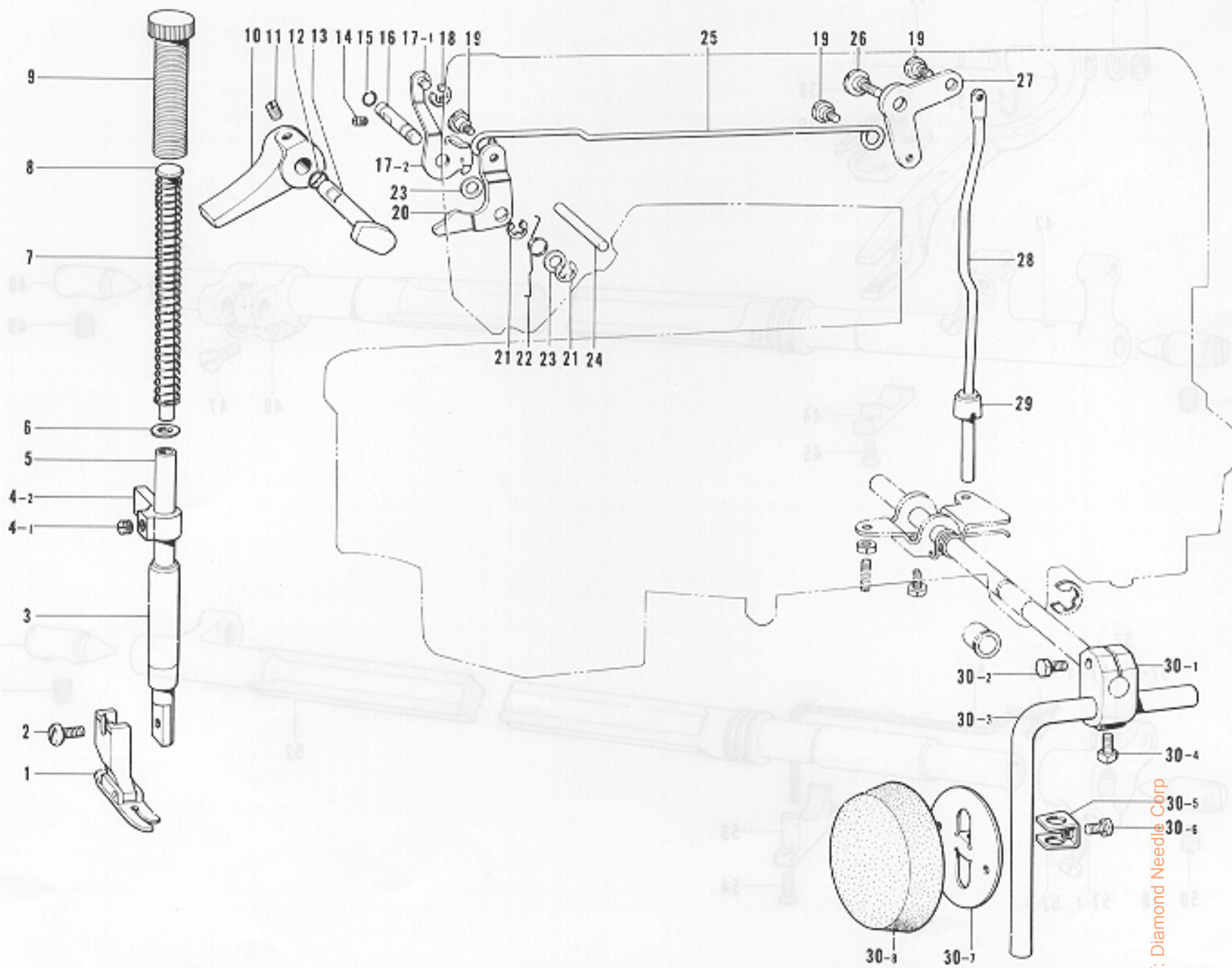
C. Feed Mechanism(Part 2)



| Ref. No. | Name of Parts | Q'ty | Parts No. | Assembly No. | Ref. No. | Name of Parts | Q'ty | Parts No. | Assembly No. |
|----------|---------------------|------|-------------|--------------|----------|--------------------|------|-------------|---|
| C-33 | Stop Ring | 1 | 048080-3-42 | | C-49 | Screw | 1 | 151606-0-01 | |
| C-34 | Ring | 1 | 115663-0-01 | | C-50 | Taper Center Right | 1 | 104848-0-01 | |
| C-35 | Feed Bar | 1 | 147767-0-01 | | C-51 | Screw | 1 | 151606-0-01 | |
| C-36 | Feed Bar Shaft | 1 | 147508-0-01 | | C-52 | Feed Lifting Shaft | 1 | 147510-0-01 | |
| C-37 | Wick Hanger | 1 | 150342-0-01 | | C-53 | Oil Stopper | 1 | 118559-0-01 | |
| C-38 | Screw | 2 | 100080-0-03 | | C-54 | Screw | 2 | 009670-8-12 | |
| C-39 | Feed Dog | 1 | | | C-55 | Wick | 1 | 108802-0-01 | |
| C-40 | Taper Center Left | 1 | 104847-0-01 | | C-56 | Wick Supporter | 1 | 104567-0-01 | |
| C-41 | Screw | 1 | 151606-0-01 | | C-57-1 | Feed Lifting Arm | 1 | | C-57 Feed Lifting Arm Assembly 181941-0-01 |
| C-42 | Feed Rock Shaft | 1 | 147506-0-01 | | C-57-2 | Screw | 1 | 009681-6-12 | |
| C-43 | Screw | 1 | 104908-0-01 | | C-57-3 | Slide Block Stud | 1 | | |
| C-44 | Oil Stopper | 1 | 118558-0-01 | | C-57-4 | Slide Block | 1 | | |
| C-45 | Screw | 2 | 009670-8-12 | | C-57-5 | Washer | 1 | | |
| C-46 | Feed Rock Shaft Arm | 1 | 109152-0-01 | | C-58 | Taper Center Left | 1 | 104847-0-01 | |
| C-47 | Screw | 2 | 009681-2-12 | | C-59 | Screw | 1 | 151606-0-01 | |
| C-48 | Taper Center Right | 1 | 104848-0-01 | | | | | | |

Copyright © of Diamond Needle Corp

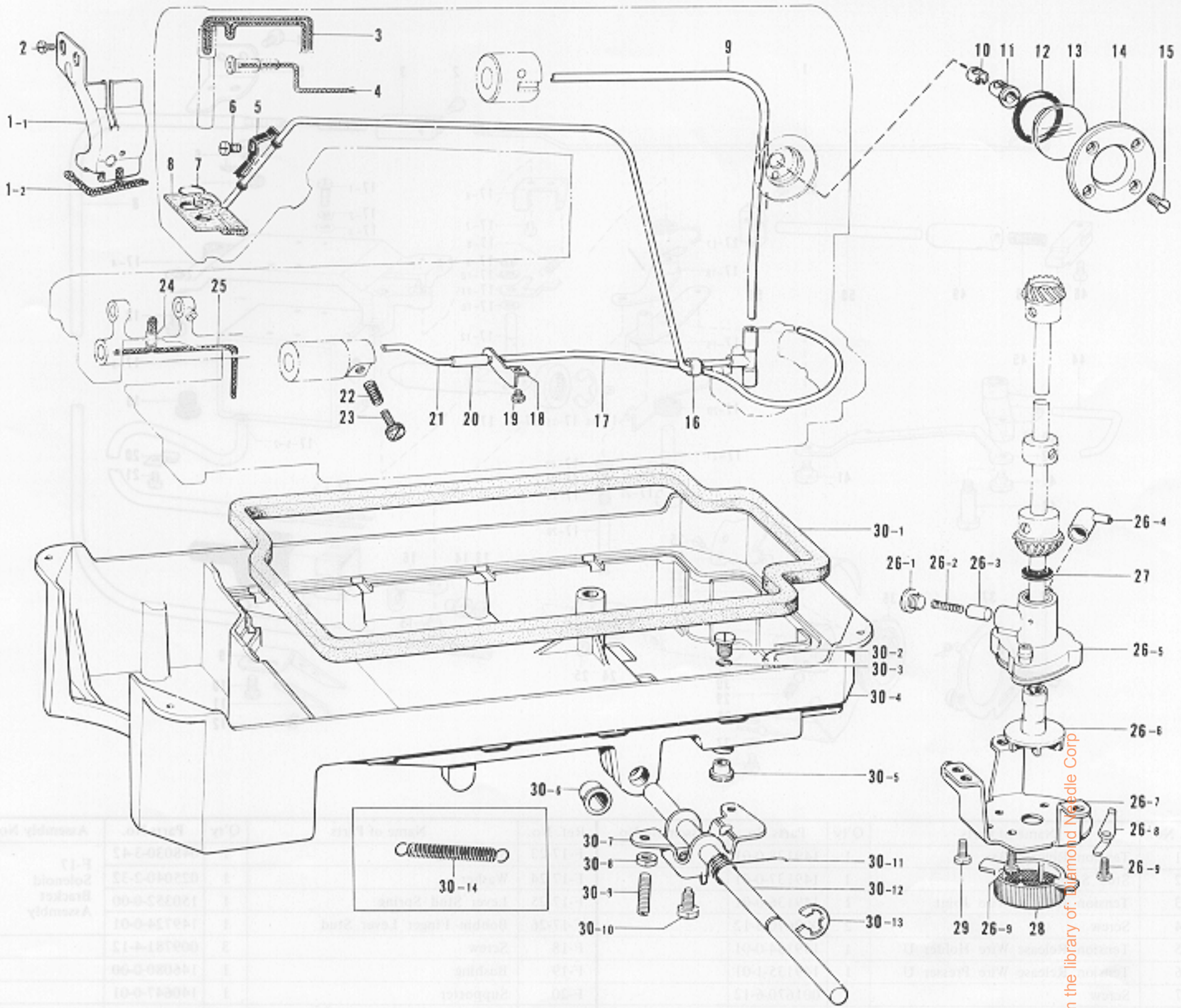
D. Presser Foot and Knee Lifter Mechanism



| Ref. No. | Name of Parts | Q'ty | Parts No. | Assembly No. | Ref. No. | Name of Parts | Q'ty | Parts No. | Assembly No. |
|----------|--------------------------------|------|-------------|--|----------|--------------------------------|------|-------------|---------------------------------|
| D-1 | Presser Foot | 1 | | | D-19 | Screw | 3 | 145478-0-01 | |
| D-2 | Screw | 1 | 001671-0-14 | | D-20 | Presser Bar Lifter Lever Shaft | 1 | 145580-0-01 | |
| D-3 | Presser Bar Bushing | 1 | 145472-0-01 | | D-21 | Stop Ring | 2 | 048040-3-42 | |
| D-4-1 | Presser Bar Clamp | 1 | | D-4 Presser Bar Clamp Assembly 181919-0-01 | D-22 | Spring | 1 | | |
| D-4-2 | Screw | 1 | 013760-6-10 | | D-23 | Washer | 2 | 109763-0-02 | |
| D-5 | Presser Bar | 1 | 111466-0-01 | | D-24 | Tension Release Stud | 1 | 145691-0-01 | |
| D-6 | Presser Spring Washer | 1 | 140407-0-01 | | D-25 | Knee Lifter Connector | 1 | 145476-0-01 | |
| D-7 | Presser Spring | 1 | 147514-0-01 | | D-26 | Screw | 1 | 145480-0-01 | |
| D-8 | Presser Spring Bar | 1 | 141208-0-01 | | D-27 | Knee Lifter Lever | 1 | 145479-0-01 | |
| D-9 | Screw | 1 | 141207-0-01 | | D-28 | Knee Lifter Bar | 1 | 145481-0-01 | |
| D-10 | Presser Bar Lifter | 1 | 145482-0-01 | | D-29 | Knee Lifter Complying Bar | 1 | 145573-0-00 | |
| D-11 | Screw | 1 | 013710-5-12 | | D-30-1 | Knee Lifter Joint | 1 | 146039-0-01 | D-30 Knee Lifter Assembly |
| D-12 | Packing | 1 | 081001-6-70 | | D-30-2 | Bolt | 1 | 017762-0-13 | |
| D-13 | Presser Bar Lifter Crank | 1 | 145483-0-01 | | D-30-3 | Knee Lifter Bar | 1 | 104619-0-02 | |
| D-14 | Screw | 1 | 100128-0-02 | | D-30-4 | Bolt | 1 | 100463-0-01 | |
| D-15 | O Ring | 1 | 081003-0-70 | | D-30-5 | Knee Lifter Plate Stopper | 1 | 114967-0-01 | |
| D-16 | Presser Bar Lifter Lever Shaft | 1 | 145474-0-01 | | D-30-6 | Bolt | 1 | 110087-0-01 | |
| D-17-1 | Tension Release Bar Hook | 1 | | D-17 Tension Releaser | D-30-7 | Knee Lifter Plate | 1 | 114966-0-01 | |
| D-17-2 | Tension Release Plate | 1 | | | D-30-8 | Knee Lifter Cover | 1 | 140503-0-01 | |
| D-18 | Stop Ring | 1 | 048030-3-42 | | | | | | |

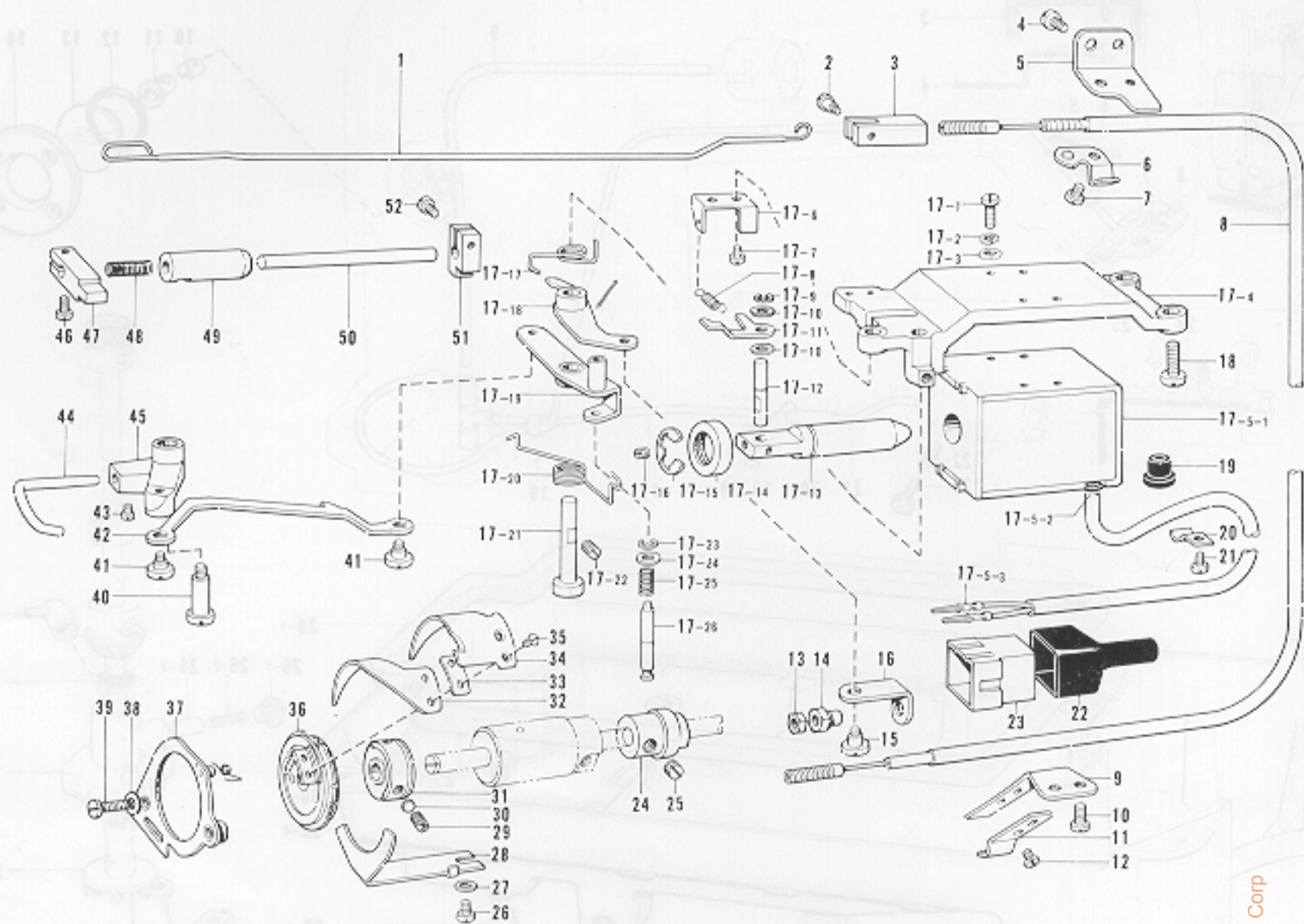
From the library of: Diamond Needle Corp

E. Lubrication



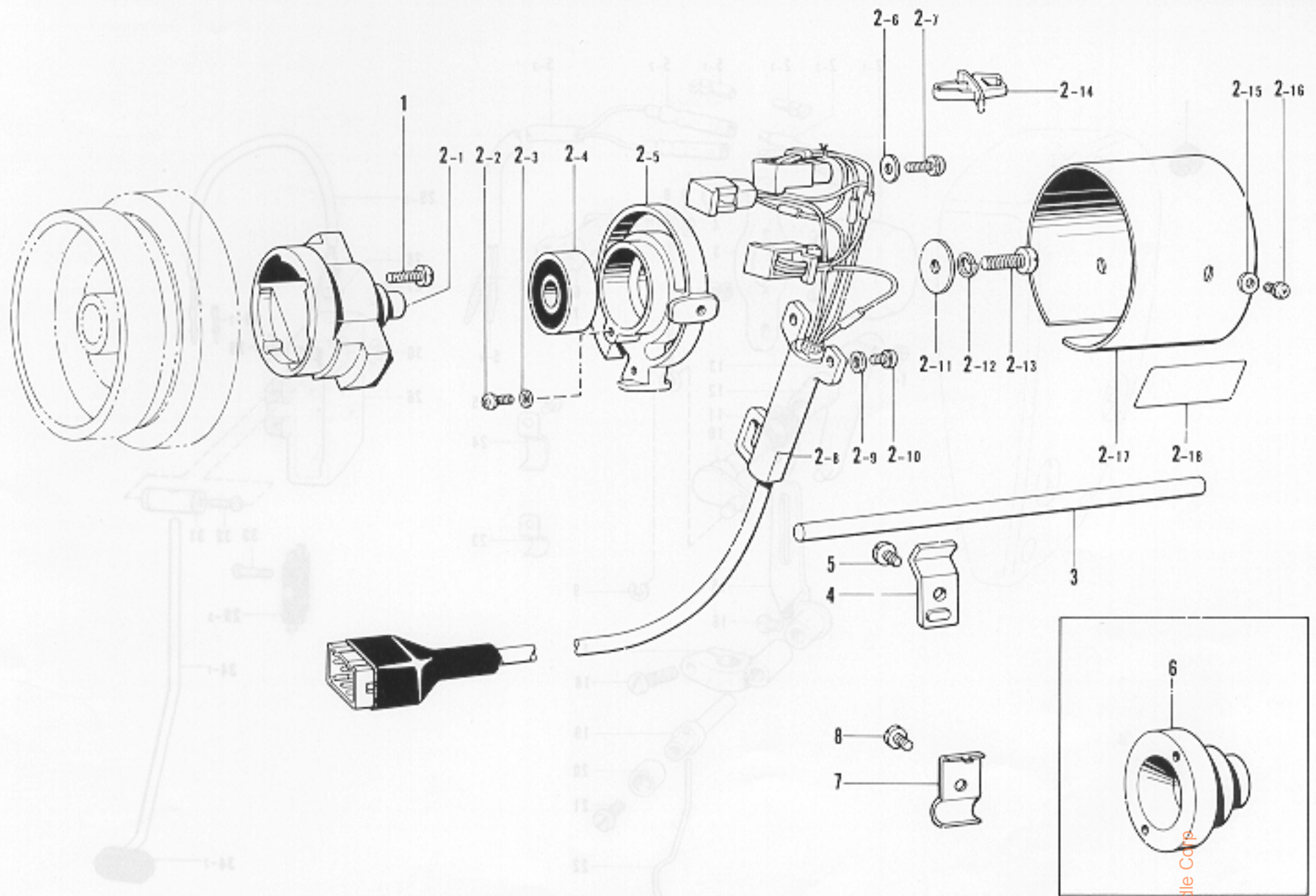
| Ref. No. | Name of Parts | Q'ty | Parts No. | Assembly No. | Ref. No. | Name of Parts | Q'ty | Parts No. | Assembly No. |
|----------|---------------------|------|-------------|---|---------------------------|--------------------|-------------|--------------------------|---|
| E- 1-1 | Oil Stopper Plate | 1 | | E-1 Oil Stopper Plate Assembly 181639-0-01 | E-26-1 | Oil Draining Screw | 1 | 112467-0-02 | E-26 Pump Body Assembly 181476-1-01 |
| E- 1-2 | Wick | 1 | 109405-0-01 | | E-26-2 | Spring | 1 | 144876-0-01 | |
| E- 2 | Screw | 2 | 009670-5-12 | E-26-3 | Plunger | 1 | 144875-0-01 | | |
| E- 3 | Wick | 1 | 108804-0-01 | E-26-4 | Joint | 1 | 144878-0-01 | | |
| E- 4 | Wick | 1 | 109405-0-01 | E-26-5 | Pump Body | 1 | 148848-0-01 | | |
| E- 5 | Tube Holder | 1 | 145547-0-01 | E-26-6 | Pump Propeller | 1 | 148849-0-01 | | |
| E- 6 | Screw | 1 | 009670-5-13 | E-26-7 | Pump | 1 | 144869-0-01 | | |
| E- 7 | Felt Support | 1 | 145737-0-01 | E-26-8 | Spring | 2 | 144874-0-01 | | |
| E- 8 | Tube | 1 | 145543-0-01 | E-26-9 | Screw | 4 | 009670-8-12 | | |
| E- 9 | Oil Tube Upper | 1 | 147496-0-00 | E-27 | Oil Stopper | 1 | 146196-0-01 | | |
| E-10 | Tube Holder Cap | 1 | 146314-0-00 | E-28 | Pump Filter | 1 | 144872-0-01 | | |
| E-11 | Tube Holder | 1 | 145529-0-00 | E-29 | Screw | 3 | 009680-7-13 | | |
| E-12 | O Ring | 1 | 081014-6-70 | E-30-1 | Packing | 1 | 146040-0-01 | E-30 Oil Pan Assembly | |
| E-13 | Oil Gauge Window | 1 | 104547-0-01 | E-30-2 | Screw | 1 | 140518-0-01 | | |
| E-14 | Oil Gauge Flange | 1 | 104546-0-01 | E-30-3 | O Ring | 1 | 081007-0-70 | | |
| E-15 | Screw | 1 | 102538-0-02 | E-30-4 | Oil Pan | 1 | | | |
| E-15 | Tube | 1 | 146253-0-00 | E-30-5 | Oil Cap | 1 | 140480-0-01 | | |
| E-17 | Oil Tube D Assembly | 1 | 149144-0-01 | E-30-6 | Knee Lifter Shaft Bushing | 2 | 149578-0-00 | | |
| E-18 | Tube Holder | 1 | 149146-0-01 | E-30-7 | Knee Lifter | 1 | 146037-0-01 | | |
| E-19 | Screw | 1 | 009680-6-12 | E-30-8 | Nut | 2 | 100022-0-04 | | |
| E-20 | Tube Joint | 1 | 149998-0-00 | E-30-9 | Screw | 2 | 104885-0-01 | | |
| E-21 | Oil Tube Lower | 1 | 149999-0-00 | E-30-10 | Bolt | 1 | 146367-0-01 | | |
| E-22 | Spring | 1 | 116794-0-01 | E-30-11 | Spring | 1 | | | |
| E-23 | Screw | 1 | 145534-0-01 | E-30-12 | Knee Lifter Shaft | 1 | | | |
| E-24 | Vinyl Tube | 1 | 150340-0-00 | E-30-13 | Stop Ring | 1 | 145293-0-01 | | |
| E-25 | Wick | 1 | 108801-0-01 | E-30-14 | Spring | 2 | | | |

F. Thread Trimmer and Tension Releaser



| Ref. No. | Name of Parts | Q'ty | Parts No. | Assembly No. | Ref. No. | Name of Parts | Q'ty | Parts No. | Assembly No. |
|----------|----------------------------------|------|-------------|---|----------|-------------------------------------|------|-------------|---|
| F-1 | Tension Release Bar | 1 | 149138-0-01 | | F-17-23 | Stop Ring | 1 | 048030-3-42 | F-17 Solenoid Bracket Assembly |
| F-2 | Stud Screw | 1 | 149137-0-01 | | F-17-24 | Washer | 1 | 025040-2-32 | |
| F-3 | Tension Release Wire Joint | 1 | 149136-0-01 | | F-17-25 | Lever Stud Spring | 1 | 150352-0-00 | |
| F-4 | Screw | 2 | 009670-6-12 | | F-17-26 | Bobbin Finger Lever Stud | 1 | 149724-0-01 | |
| F-5 | Tension Release Wire Holder U | 1 | 149134-0-01 | | F-18 | Screw | 3 | 009781-4-12 | |
| F-6 | Tension Release Wire Presser U | 1 | 149135-1-01 | | F-19 | Bushing | 1 | 146080-0-00 | |
| F-7 | Screw | 1 | 001670-6-12 | | F-20 | Supporter | 1 | 140647-0-01 | |
| F-8 | Tension Release Wire | 1 | 149130-1-01 | | F-21 | Screw | 1 | 009670-6-12 | |
| F-9 | Tension Release Wire Holder D | 1 | 149132-0-01 | | F-22 | Connector Cap | 1 | | |
| F-10 | Screw | 2 | 009680-6-12 | | F-23 | Nylon Connector | 1 | | |
| F-11 | Tension Release Wire Presser D | 1 | 149133-1-01 | | F-24 | Bobbin Finger Driving Cam | 1 | 149725-0-01 | |
| F-12 | Screw | 1 | 001670-6-12 | | F-25 | Screw | 2 | 191706-0-01 | |
| F-13 | Nut | 1 | 021670-2-03 | | F-26 | Screw | 1 | 009680-7-13 | |
| F-14 | Wire Sleeve | 1 | 149775-0-01 | | F-27 | Washer | 1 | 025680-1-33 | |
| F-15 | Stud Screw | 1 | 149127-0-01 | | F-28 | Cover | 1 | 149128-0-01 | |
| F-16 | Tension Release Link | 1 | 149131-0-01 | | F-29 | Screw | 3 | 014680-6-22 | |
| F-17-1 | Screw | 4 | 007401-0-12 | | F-30 | Washer | 3 | 147697-0-01 | |
| F-17-2 | Washer | 4 | 028040-2-43 | | F-31 | Thread Trimmer Clutch | 1 | 149709-0-01 | |
| F-17-3 | Washer | 4 | 025040-1-33 | | F-32 | Lower Thread Finger | 1 | 145610-1-01 | |
| F-17-4 | Thread Trimming Solenoid Bracket | 1 | 149110-0-01 | | F-33 | Spacer | 1 | | |
| F-17-5-1 | Thread Trimming Solenoid | 1 | | F-17-5 Thread Trimming Solenoid Assembly | F-34 | Movable Knife | 1 | 145608-0-01 | |
| F-17-5-2 | Bushing | 1 | | | F-35 | Screw | 2 | 141542-0-01 | |
| F-17-5-3 | Terminal Pin | 2 | | | F-36 | Movable Knife Holder Assembly | 1 | 149710-0-01 | |
| F-17-6 | Thread Trimming Claw Stopper | 1 | 149120-0-01 | | F-37 | Movable Knife Holder Plate Assembly | 1 | 149712-0-01 | |
| F-17-7 | Screw | 2 | 100242-0-03 | | F-38 | Washer | 2 | 100645-0-03 | |
| F-17-8 | Thread Trimming Claw Spring | 1 | 149121-0-01 | | F-39 | Screw | 2 | 009681-2-12 | |
| F-17-9 | Stop Ring | 1 | 048030-3-40 | | F-40 | Bobbin Finger Crank Stud | 1 | 149124-0-01 | |
| F-17-10 | Washer | 2 | 100645-0-03 | | F-41 | Stud Screw | 2 | 149127-0-01 | |
| F-17-11 | Thread Trimming Claw | 1 | 149114-0-01 | | F-42 | Bobbin Finger Connecting Rod | 1 | 149726-0-01 | |
| F-17-12 | Plunger Pin | 1 | 149113-0-01 | | F-43 | Screw | 2 | 144458-0-01 | |
| F-17-13 | Plunger | 1 | 149111-0-01 | F-17 Solenoid Bracket Assembly | F-44 | Bobbin Finger | 1 | 149125-0-01 | |
| F-17-14 | Plunger Stopper | 1 | 149112-0-01 | | F-45 | Bobbin Finger Crank | 1 | 149123-0-01 | |
| F-17-15 | Stop Ring | 1 | 048090-3-42 | | F-46 | Screw | 1 | 009660-7-12 | |
| F-17-16 | Screw | 1 | 013679-4-12 | | F-47 | Stopper | 1 | 145617-0-01 | |
| F-17-17 | Thread Trimming Lever Spring | 1 | 149115-0-01 | | F-48 | Spring | 1 | 145621-0-01 | |
| F-17-18 | Thread Trimming Lever | 1 | 149722-0-01 | | F-49 | Thread Trimming Shaft Bushing | 1 | 149105-0-00 | |
| F-17-19 | Bobbin Finger Lever | 1 | 149723-0-01 | | F-50 | Thread Trimming Shaft | 1 | 149104-0-01 | |
| F-17-20 | Bobbin Finger Lever Spring | 1 | 149118-0-01 | | F-51 | Thread Trimming Claw Block | 1 | 149106-0-01 | |
| F-17-21 | Thread Trimming Lever Stud | 1 | 149119-0-01 | | F-52 | Screw | 1 | 009660-7-12 | |
| F-17-22 | Screw | 1 | 151602-0-02 | | | | | | |

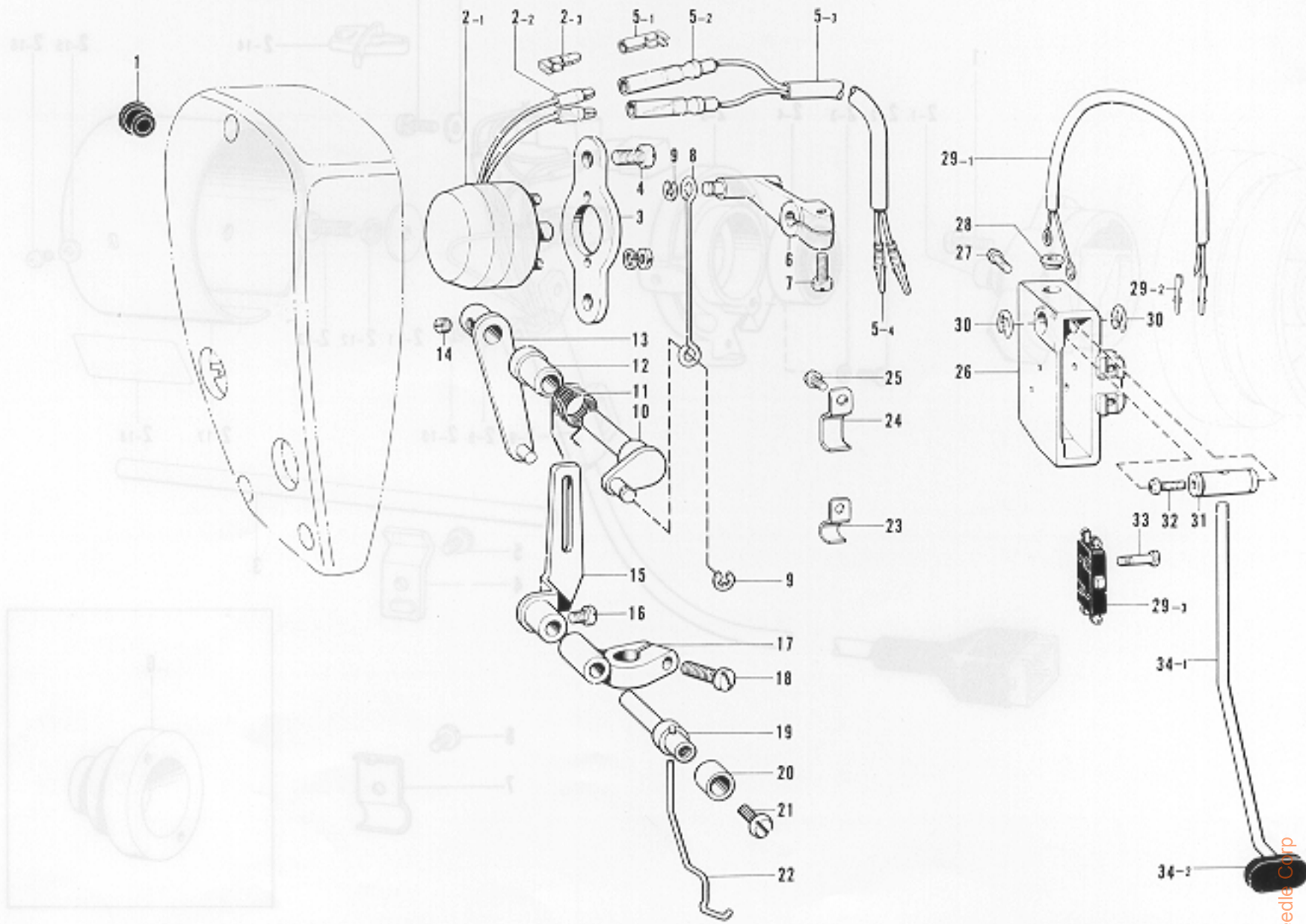
G. Synchronizer



| Ref. No. | Name of Parts | Q'ty | Parts No. | Assembly No. | Ref. No. | Name of Parts | Q'ty | Parts No. | Assembly No. |
|----------|-------------------|------|-------------|---------------------------|----------|-------------------------|------|-------------|---------------------------|
| G-1 | Screw | 2 | 009711-4-12 | | G-2-13 | Screw | 1 | 216880-0-01 | |
| G-2- 1 | Magnet Stud | 1 | | | G-2-14 | Cord Holder | 1 | | |
| G-2- 2 | Screw | 1 | 215083-0-01 | | G-2-15 | Washer | 2 | 025040-1-35 | G-2 Synchronizer Assembly |
| G-2- 3 | Washer | 1 | 025030-3-35 | | G-2-16 | Screw | 2 | 215080-0-01 | |
| G-2- 4 | Bearing | 1 | | | G-2-17 | Synchronizer Cover | 1 | | |
| G-2- 5 | Hole IC Holder | 1 | | | G-2-18 | Level | 1 | | |
| G-2- 6 | Washer | 3 | 025040-3-35 | G-2 Synchronizer Assembly | G-3 | Synchronizer Holder Bar | 1 | 218944-0-01 | |
| G-2- 7 | Screw | 3 | 217093-0-01 | | G-4 | Holder | 1 | 216332-0-01 | |
| G-2- 8 | Hole IC with Cord | 1 | 218953-0-01 | | G-5 | Screw | 1 | 009781-4-12 | |
| G-2- 9 | Washer | 2 | 025040-1-35 | | G-6 | Slip Ring Support | 1 | | |
| G-2-10 | Screw | 2 | 215080-0-01 | | G-7 | Cord Stopper | 1 | 145597-0-01 | |
| G-2-11 | Washer | 1 | 025060-3-35 | | G-8 | Screw | 1 | 009680-5-12 | |
| G-2-12 | Washer | 1 | 028060-2-34 | | | | | | |

* Parts of H-1-H-25 are Thread Wiper (-200, -400, -500)
 * Parts of H-26-H-34 are Quick Back Switch Mechanism (-400, -500)

H. Thread Wiper (-200, -400, -500) · Quick Back Switch Mechanism (-400, -500)

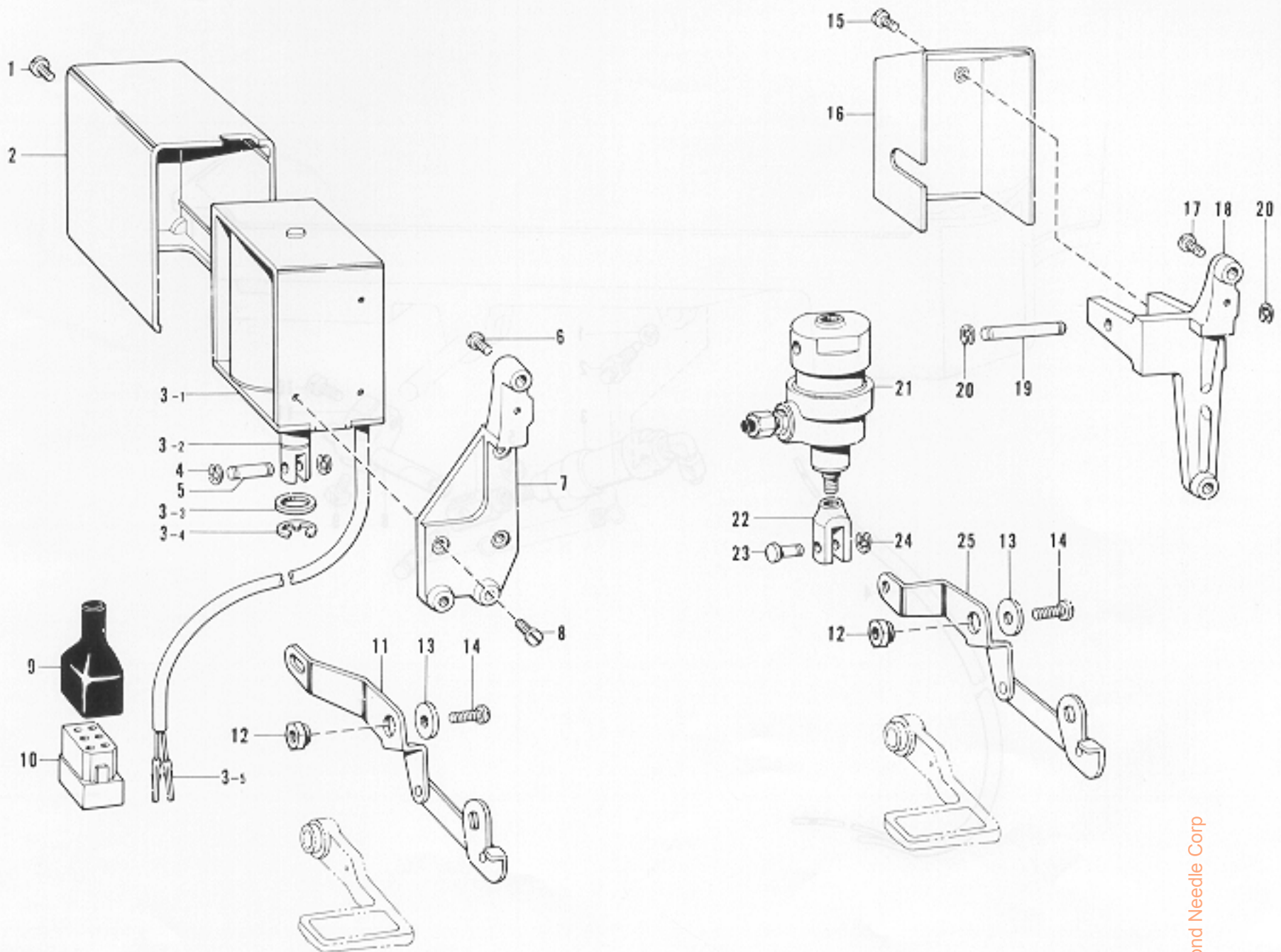


| Ref. No. | Name of Parts | Q'ty | Parts No. | Assembly No. | Ref. No. | Name of Parts | Q'ty | Parts No. | Assembly No. |
|----------|--------------------|------|-------------|---------------------------------------|----------|--------------------------|------|-------------|---------------------------------|
| H-1 | Bushing | 1 | 146080-0-00 | | H-17 | Thread Wiper Supporter | 1 | 146093-0-01 | |
| H-2-1 | Rotary Solenoid | 1 | | H-2 Thread Wiper Solenoid 146082-0-00 | H-18 | Screw | 1 | 009681-4-14 | |
| H-2-2 | Insulated Cover | 2 | | | H-19 | Thread Wiper Stud | 1 | 146092-0-01 | |
| H-2-3 | Plug | 2 | 146084-0-00 | | H-20 | Thread Wiper Stud Collar | 1 | 146288-0-01 | |
| H-3 | Solenoid Set Plate | 1 | 146081-0-01 | | H-21 | Screw | 1 | 001670-5-14 | |
| H-4 | Screw | 2 | 009680-8-12 | | H-22 | Thread Wiper | 1 | 146094-0-01 | |
| H-5-1 | Insulated Sleeve | 2 | | H-5 Cord | H-23 | Supporter | 3 | | |
| H-5-2 | Receptacle | 2 | 146097-0-00 | | H-24 | Tube Holder | 3 | | |
| H-5-3 | Thread Wiper Cord | 1 | | | H-25 | Screw | 3 | 009670-6-12 | |
| H-5-4 | Terminal Pin | 2 | | | H-26 | Reverse Switch Case | 1 | 146120-0-01 | |
| H-6 | Solenoid Link | 1 | 146086-0-01 | | H-27 | Screw | 2 | 009671-0-12 | |
| H-7 | Screw | 1 | 009671-0-13 | | H-28 | Bushing | 1 | 146080-0-00 | |
| H-8 | Wire Link | 1 | 146087-0-01 | | H-29-1 | Reverse Switch Cord | 1 | | H-29 Switch |
| H-9 | Stop Ring | 2 | 048025-3-42 | | H-29-2 | Terminal Pin | 2 | | |
| H-10 | Thread Wiper Crank | 1 | 146088-0-01 | | H-29-3 | Micro Switch | 1 | 140643-0-00 | |
| H-11 | Spring | 1 | 146089-0-01 | | H-30 | Stop Ring | 2 | 048080-3-42 | |
| H-12 | Bushing | 1 | 146079-0-01 | | H-31 | Actuator Pin | 1 | 146125-0-01 | |
| H-13 | Thread Wiper Lever | 1 | 146090-0-01 | | H-32 | Screw | 1 | 009681-4-14 | |
| H-14 | Screw | 2 | 102716-0-02 | | H-33 | Screw | 2 | 146124-0-01 | |
| H-15 | Grooved Link | 1 | 146091-0-01 | | H-34-1 | Actuator | 1 | 146127-0-01 | H-34 Reverse Finger 146124-0-01 |
| H-16 | Screw | 1 | 111443-0-01 | | H-34-2 | Actuator | 1 | 146128-0-00 | |

* Parts of H-1~H-25 are Thread Wiper (-200, -400, -500).
 * Parts of H-26~H-34 are Quick Back Switch Mechanism (-400, -500).

J. Quick Back Mechanism (-400, -500)

K. Presser Lifter Mechanism (-500)



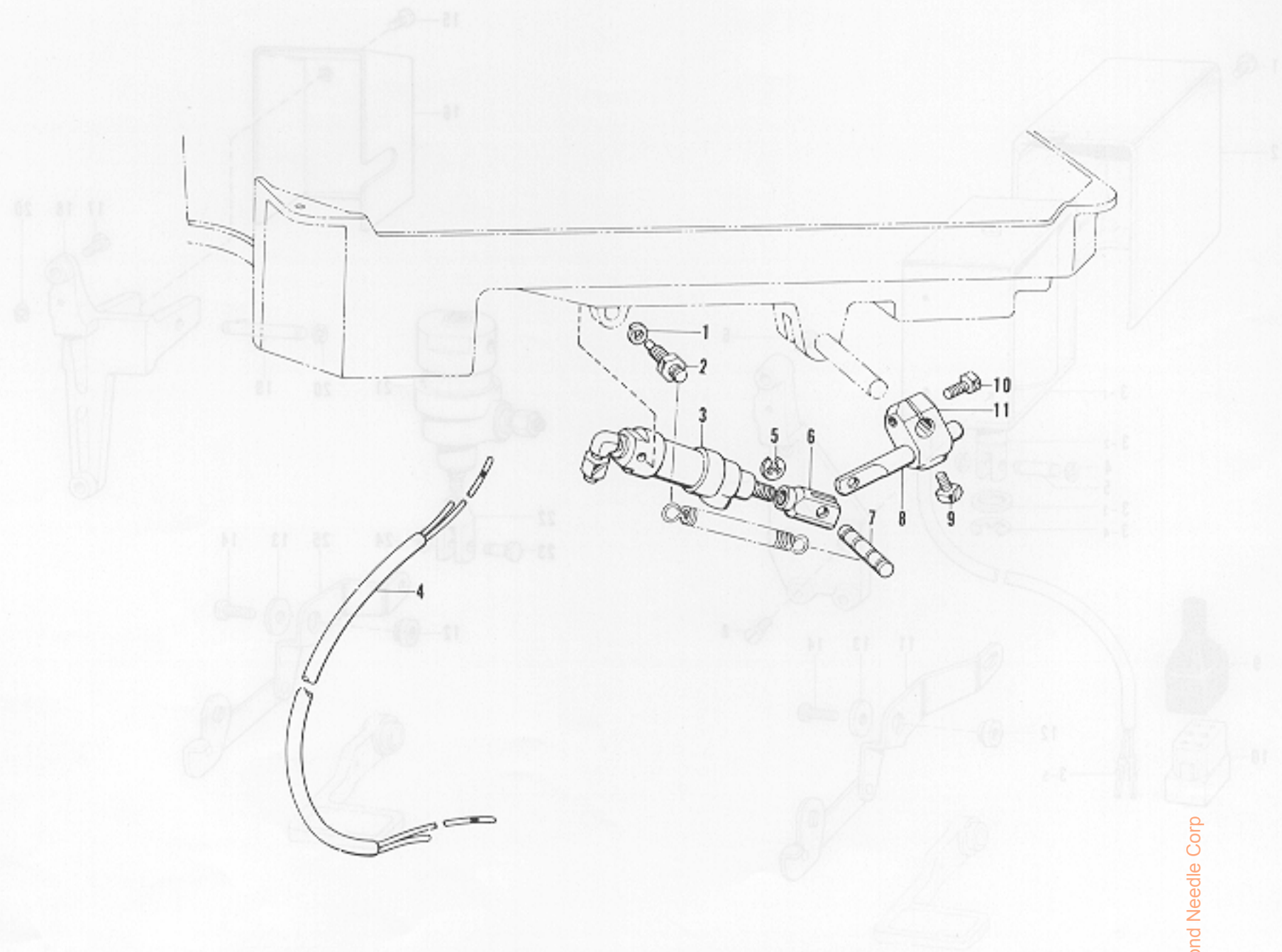
Sales Representative: Diamond Needle Corp

| Ref. No. | Name of Parts | Q'ty | Parts No. | Assembly No. | Ref. No. | Name of Parts | Q'ty | Parts No. | Assembly No. |
|----------|--------------------------|------|-------------|----------------------------|----------|---------------------------------|------|-------------|--------------|
| J- 1 | Screw | 1 | 007506-6-02 | | J-12 | Solenoid Lever Stud | 1 | 149094-0-01 | |
| J- 2 | Solenoid Cover | 1 | 146105-0-00 | | J-13 | Washer | 1 | 149095-0-01 | |
| J- 3-1 | Solenoid | 1 | | J-3 Reverse Solenoid | J-14 | Screw | 1 | 009781-4-12 | |
| J- 3-2 | Plunger | 1 | | | J-15 | Screw | 2 | 009670-5-13 | |
| J- 3-3 | Rubber Stopper | 1 | 146104-0-00 | | J-16 | Cover | 1 | 146156-0-01 | |
| J- 3-4 | Stop Ring | 1 | 146103-0-01 | | J-17 | Screw | 2 | 009781-8-12 | |
| J- 3-5 | Terminal Pin | 2 | | | J-18 | Cylinder Supporter | 1 | 149573-1-01 | |
| J- 4 | Stop Ring | 2 | 048040-3-42 | | J-19 | Cylinder Supporter Shaft | 1 | 146148-0-01 | |
| J- 5 | Pin | 1 | 147754-0-01 | | J-20 | Stop Ring | 2 | 048040-3-42 | |
| J- 6 | Screw | 3 | 009781-8-12 | | J-21 | Reverse Cylinder | 1 | 146149-0-01 | |
| J- 7 | Reverse Solenoid Bracket | 1 | 149140-1-01 | | J-22 | Piston Rod Joint | 1 | 140627-0-01 | |
| J- 8 | Screw | 3 | 007500-8-12 | | J-23 | Pin | 1 | 146153-0-01 | |
| J- 9 | Connector Cap | 1 | | | J-24 | Stop Ring | 1 | 048040-3-42 | |
| J-10 | 6P Connector | 1 | | | J-25 | Reverse Cylinder Lever Assembly | 1 | 149571-0-01 | |
| J-11 | Solenoid Lever Assembly | 1 | 149089-0-01 | | | | | | |

* Parts J-1~J-14 are for -400 type specifications, and parts J-12~J-25 are for -500 type specifications.

K. Presser Lifter Mechanism (-500)

J. Quick Back Mechanism (-400, -500)



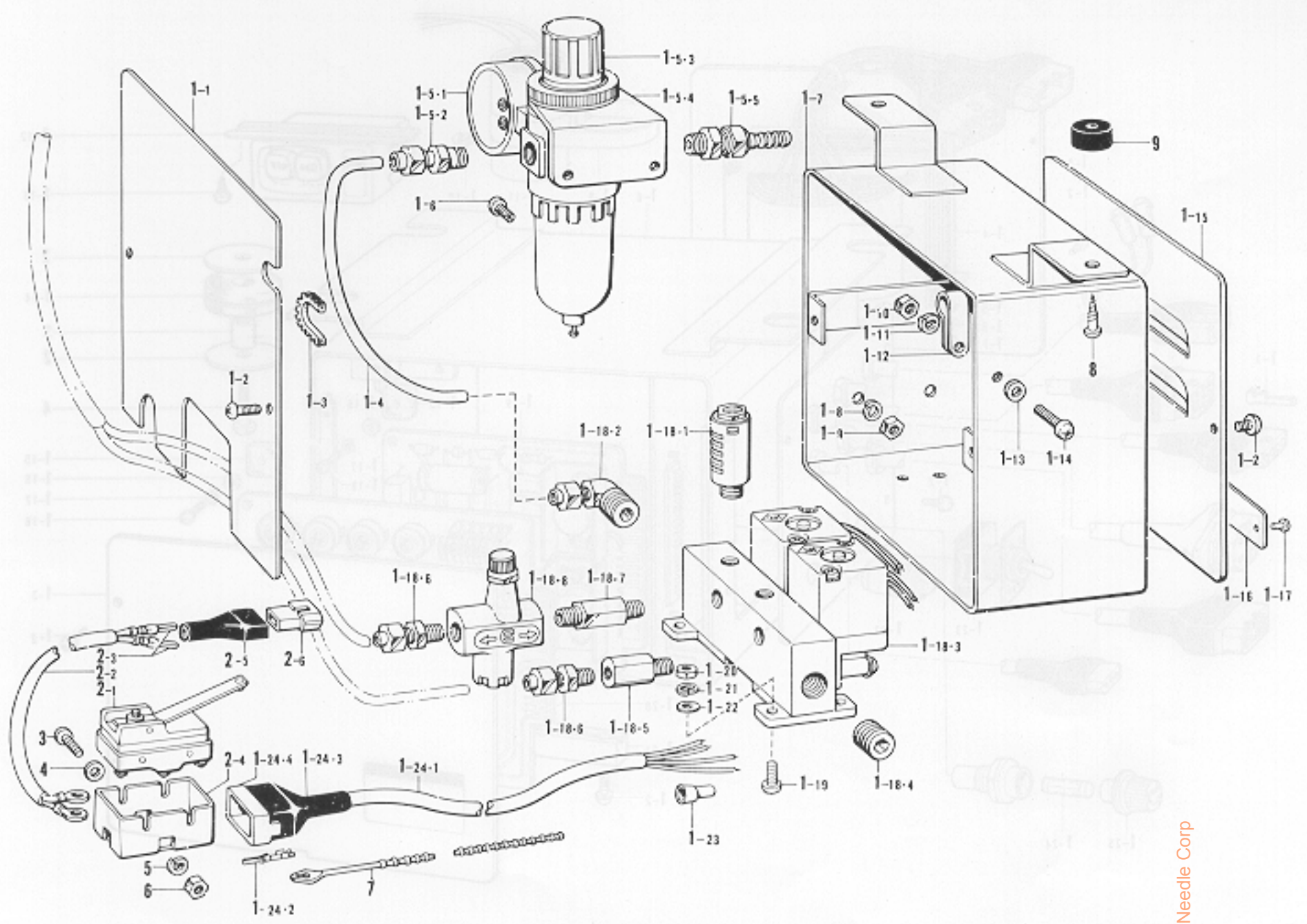
| Ref. No. | Name of Parts | Q'ty | Parts No. | Assembly No. | Ref. No. | Name of Parts | Q'ty | Parts No. | Assembly No. |
|----------|-----------------------|------|-------------|--------------|----------|-------------------|------|-------------|--------------|
| K- 1 | Washer | 2 | 028060-2-40 | | K- 7 | Pin | 1 | 146986-0-01 | |
| K- 2 | Screw | 2 | 147141-0-01 | | K- 8 | Piston Drive Link | 1 | 140668-0-01 | |
| K- 3 | Presser Foot Cylinder | 1 | 146157-0-01 | | K- 9 | Bolt | 1 | 100463-0-01 | |
| K- 4 | Air Tube Assembly | 1 | 149548-0-01 | | K-10 | Bolt | 1 | 017762-0-13 | |
| K- 5 | Stop Ring | 2 | 048040-3-42 | | K-11 | Knee Lifter Joint | 1 | 146039-0-01 | |
| K- 6 | Piston Rod Joint | 1 | 140627-0-01 | | | | | | |

From the library of: Diamond Needle Corp

Parts 1-1-14 are for -400 type specifications, and parts 1-12-13 are for -500 type specifications.

L. Valve Box (-500)

M Control Box

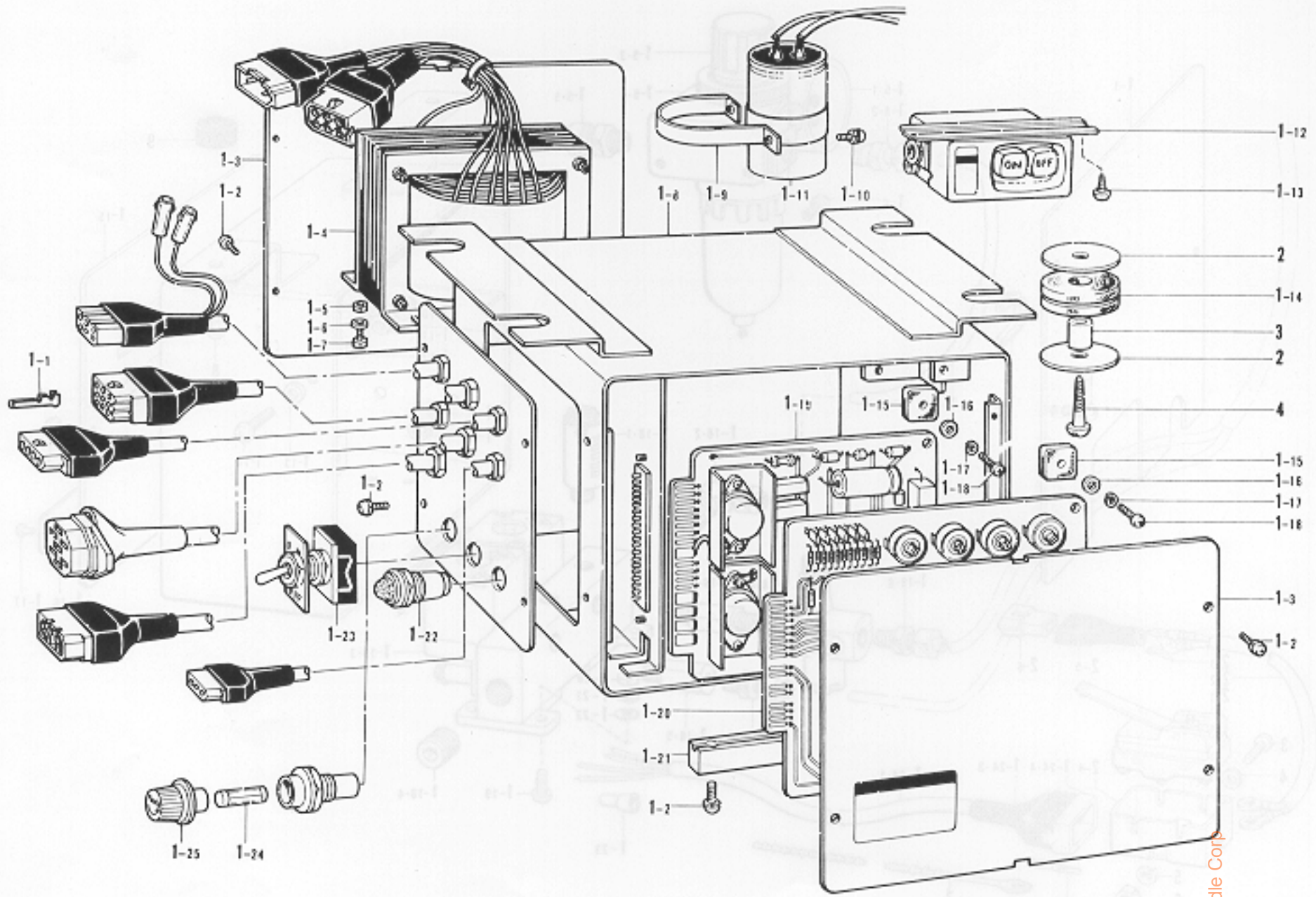


| Ref. No. | Name of Parts | Q'ty | Parts No. | Assembly No. | Ref. No. | Name of Parts | Q'ty | Parts No. | Assembly No. |
|----------|-----------------------|------|-------------|----------------|----------|--------------------------|------|-------------|----------------|
| L-1- 1 | Back Cover | 1 | | | L-1-18-6 | 1/8" Connector | 2 | 140543-0-00 | L-1-18 |
| L-1- 2 | Screw | 4 | 008490-5-64 | | L-1-18-7 | Speed Control Connector | 1 | 142037-0-00 | Solenoid |
| L-1- 3 | Nylon Bushing | 1 | 146171-0-00 | | L-1-18-8 | Speed Controller | 1 | 142038-0-01 | Valve Assembly |
| L-1- 4 | Air Tube | 1 | 140540-9-00 | | L-1-19 | Screw | 4 | 002401-2-03 | 149543-0-01 |
| L-1- 5-1 | Presser Gauge | 1 | | | L-1-20 | Nut | 4 | 021400-1-03 | |
| L-1- 5-2 | Connector | 1 | 142349-0-00 | L-1-5 | L-1-21 | Washer | 4 | 028040-2-03 | |
| L-1- 5-3 | Plastic Bottol | 1 | 143960-1-01 | Air Unit | L-1-22 | Washer | 4 | 025040-1-33 | |
| L-1- 5-4 | Air Unit Holder Plate | 1 | 143962-0-01 | Assembly | L-1-23 | Connector | 4 | 206755-0-00 | |
| L-1- 5-5 | Air Tube Connector | 1 | 140678-0-00 | 143959-1-03 | L-1-24-1 | Valve Cord | 1 | | L-1-24 |
| L-1- 6 | Screw | 2 | 002501-0-64 | | L-1-24-2 | Terminal Pir. | 4 | 143549-0-00 | Valve Cord |
| L-1- 7 | Valve Case | 1 | | | L-1-24-3 | Connector Cap | 1 | 145596-0-01 | Assembly |
| L-1- 8 | Washer | 2 | 028050-2-43 | | L-1-24-4 | 6P Connector | 1 | 146118-0-00 | 149545-0-01 |
| L-1- 9 | Nut | 2 | 021500-1-63 | | L-2-1 | Micro Switch | 1 | 140948-0-01 | |
| L-1-10 | Nut | 1 | 021300-1-03 | L-1 | L-2-2 | Presser Foot Lifter Cord | 1 | | L-2 |
| L-1-11 | Washer | 1 | 028030-2-43 | Air Control | L-2-3 | Terminal Pin | 2 | 143549-0-00 | Presser Foot |
| L-1-12 | Cord Holder | 1 | 149547-0-00 | Box | L-2-4 | Cover | 1 | 140950-0-00 | Lifter Cord |
| L-1-13 | Washer | 1 | 025030-1-33 | | L-2-5 | Connector Cap | 1 | 143489-0-01 | Assembly |
| L-1-14 | Screw | 1 | 002301-0-03 | | L-2-6 | Nylon Connector | 1 | 143488-0-01 | |
| L-1-15 | Rear Cover | 1 | | | L-3 | Screw | 2 | | |
| L-1-16 | Name Plate | 1 | | | L-4 | Washer | 2 | | |
| L-1-17 | Rivet | 2 | | | L-5 | Washer | 2 | | |
| L-1-18-1 | Silencer | 2 | 140682-0-01 | | L-6 | Nut | 2 | | |
| L-1-18-2 | 1/4" Elbow | 1 | 140538-0-00 | L-1-18 | L-7 | Bead Band | 1 | | |
| L-1-18-3 | Solenoid Valve | 1 | 149544-0-01 | Solenoid | L-8 | Screw | 2 | | |
| L-1-18-4 | 1/2" Cap | 1 | 140542-0-01 | Valve Assembly | L-9 | Cushion Rubber | 2 | | |
| L-1-18-5 | Valve Connector | 2 | 149539-0-00 | 149543-0-01 | | | | | |

From the library of Diamond Needle Corp

M. Control Box

L. Valve Box (-500)

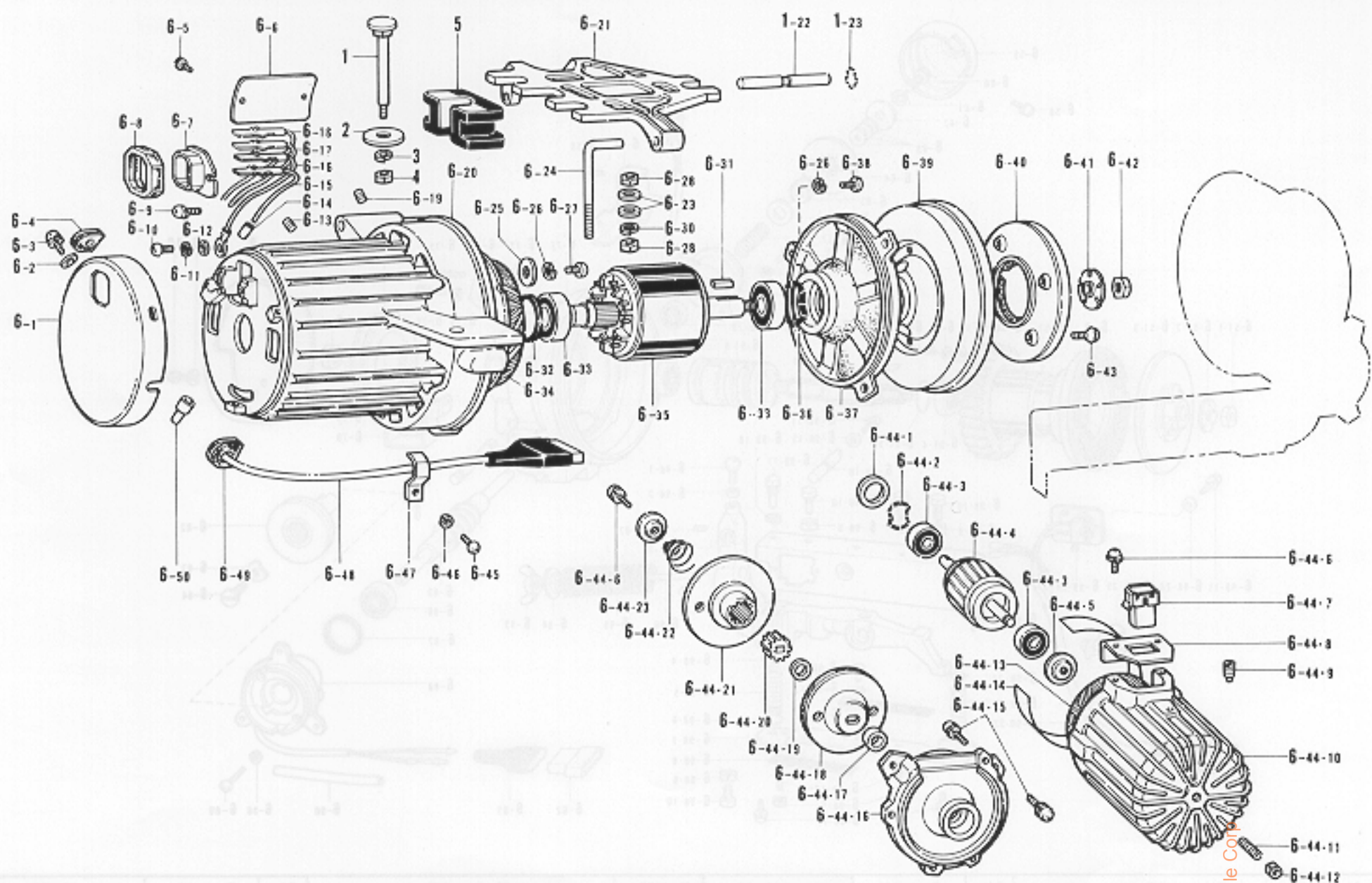


| Ref. No. | Name of Parts | Q'ty | Parts No. | Assembly No. | Ref. No. | Name of Parts | Q'ty | Parts No. | Assembly No. |
|----------|-------------------------------|------|-------------|--------------------------------|----------|-----------------------|------|-------------|--------------------------------|
| M-1- 1 | Terminal Pin | 27 | 216373-0-01 | M-1 Control Box Assembly | M-1-15 | Insulator Rubber | 2 | 216351-0-00 | M-1 Control Box Assembly |
| M-1- 2 | Screw | 16 | 215080-0-01 | | M-1-16 | Washer | 4 | 025030-3-35 | |
| M-1- 3 | Control Box Front Cover Plate | 2 | 218819-0-01 | | M-1-17 | Washer | 2 | 028030-2-43 | |
| M-1- 4 | Transformer | 1 | | | M-1-18 | Screw | 4 | 002300-8-05 | |
| M-1- 5 | Nut | 4 | 218823-0-01 | | M-1-19 | Printed Circuit Board | 1 | | |
| M-1- 6 | Washer | 4 | 025040-2-35 | | M-1-20 | Printed Circuit Board | 1 | | |
| M-1- 7 | Screw | 4 | 216870-0-01 | | M-1-21 | Mounting Rail | 2 | 218821-0-01 | |
| M-1- 8 | Control Box | 1 | | | M-1-22 | Pilot Lamp | 1 | | |
| M-1- 9 | Condenser Set Plate | 1 | | | M-1-23 | Pilot Lamp Switch | 1 | 216905-0-01 | |
| M-1-10 | Screw | 2 | | | M-1-24 | 5A Fuse | 1 | 215822-0-00 | |
| M-1-11 | Condenser | 1 | | | M-1-25 | Fuse Holder | 1 | 215387-0-01 | |
| M-1-12 | 3P Push Button Switch | 1 | 213794-0-01 | | M-2 | Washer | 8 | 214344-0-01 | |
| M-1-13 | Screw | 2 | 031451-6-03 | | M-3 | Collar | 4 | 216346-0-01 | |
| M-1-14 | Cushion Rubber | 4 | 216345-0-00 | | M-4 | Screw | 4 | 031624-0-05 | |

| | | | | | | | |
|------|-------------------------------|---|-------------|------|-----------------------|---|-------------|
| 1-1 | Terminal Pin | 1 | 216373-0-01 | 1-15 | Insulator Rubber | 1 | 216351-0-00 |
| 1-2 | Screw | 1 | 215080-0-01 | 1-16 | Washer | 1 | 025030-3-35 |
| 1-3 | Control Box Front Cover Plate | 1 | 218819-0-01 | 1-17 | Washer | 1 | 028030-2-43 |
| 1-4 | Transformer | 1 | | 1-18 | Screw | 1 | 002300-8-05 |
| 1-5 | Nut | 1 | 218823-0-01 | 1-19 | Printed Circuit Board | 1 | |
| 1-6 | Washer | 1 | 025040-2-35 | 1-20 | Printed Circuit Board | 1 | |
| 1-7 | Screw | 1 | 216870-0-01 | 1-21 | Mounting Rail | 1 | 218821-0-01 |
| 1-8 | Control Box | 1 | | 1-22 | Pilot Lamp | 1 | |
| 1-9 | Condenser Set Plate | 1 | | 1-23 | Pilot Lamp Switch | 1 | 216905-0-01 |
| 1-10 | Screw | 1 | | 1-24 | 5A Fuse | 1 | 215822-0-00 |
| 1-11 | Condenser | 1 | | 1-25 | Fuse Holder | 1 | 215387-0-01 |
| 1-12 | 3P Push Button Switch | 1 | 213794-0-01 | 2 | Washer | 8 | 214344-0-01 |
| 1-13 | Screw | 1 | 031451-6-03 | 3 | Collar | 4 | 216346-0-01 |
| 1-14 | Cushion Rubber | 1 | 216345-0-00 | 4 | Screw | 4 | 031624-0-05 |

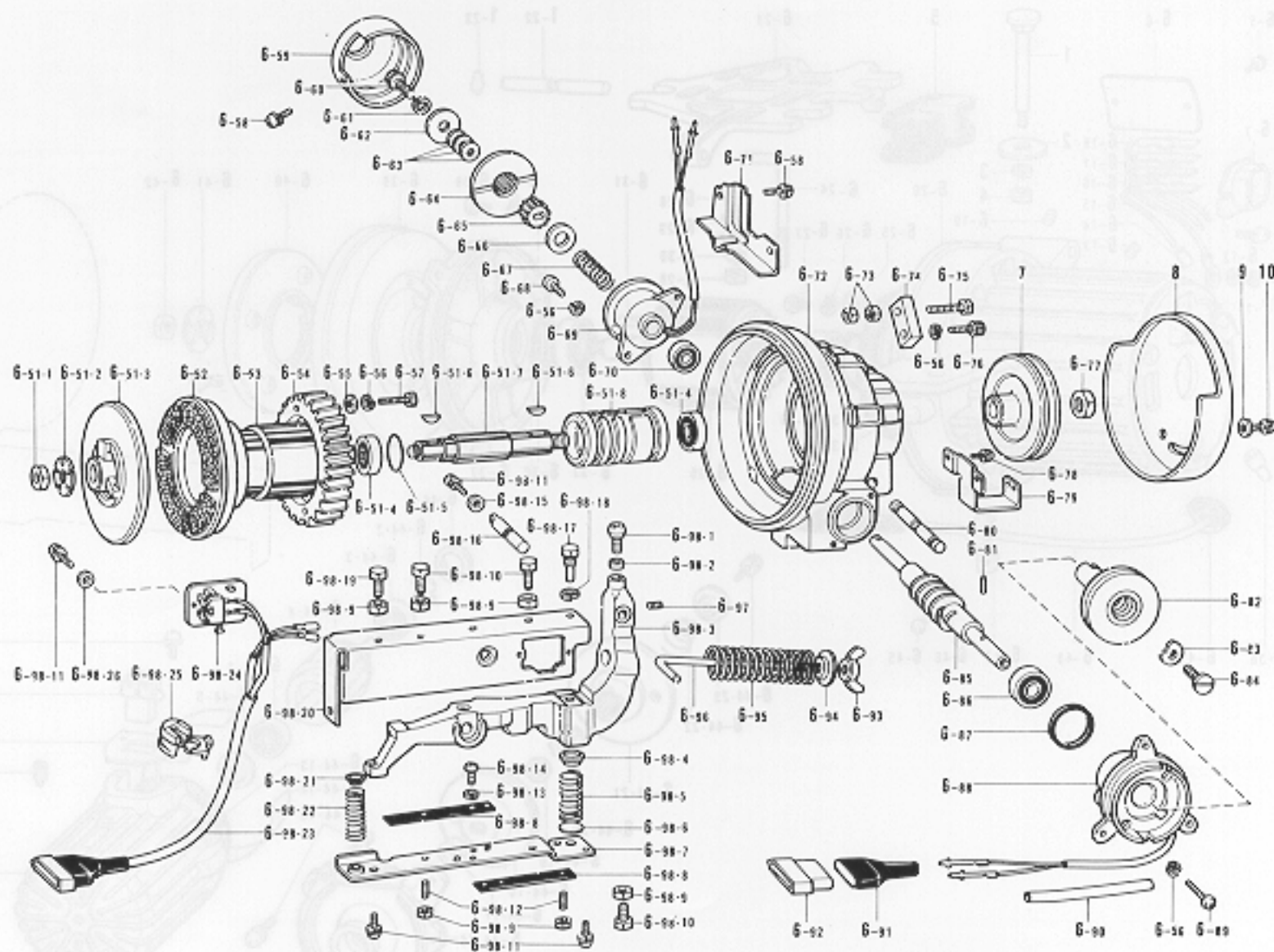
N. Motor (Part 1)

(Part 1 of 2)



| Ref. No. | Name of Parts | Q'ty | Parts No. | Assembly No. | Ref. No. | Name of Parts | Q'ty | Parts No. | Assembly No. |
|----------|-------------------------------|------|-------------|--------------------|-----------|---------------------|------|-------------|---------------------------|
| N-1 | Bolt | 3 | 210973-0-01 | | N-6-35 | Rotor | 1 | | |
| N-2 | Washer | 3 | 213650-0-01 | | N-6-36 | Washer | 1 | 206156-0-01 | |
| N-3 | Washer | 3 | 028080-2-43 | | N-6-37 | Bracket | 1 | 218871-0-01 | |
| N-4 | Nut | 3 | 021080-1-06 | | N-6-38 | Screw | 3 | 002501-6-05 | |
| N-5 | Vibration Absorbing Rubber | 3 | 213646-0-01 | | N-6-39 | Fly Wheel | 1 | | |
| N-6-1 | Frame Cover | 1 | 218863-0-01 | | N-6-40 | Clutch Lining #4 | 1 | 218873-0-00 | |
| N-6-2 | Washer | 3 | 025050-2-35 | | N-6-41 | Washer | 1 | 210941-0-02 | |
| N-6-3 | Screw | 3 | 211528-0-01 | | N-6-42 | Nut | 1 | 210942-0-02 | |
| N-6-4 | Rubber Pad #72 | 1 | 218865-0-01 | | N-6-43 | Screw | 4 | 214897-0-01 | |
| N-6-5 | Pin | 2 | 200084-0-02 | | N-6-44-1 | Washer | 2 | 218913-0-01 | |
| N-6-6 | Model Plate | 1 | | | N-6-44-2 | Washer | 3 | 218870-0-01 | |
| N-6-7 | 7P Socket | 1 | 213748-0-01 | | N-6-44-3 | Bearing 608 VV | 2 | 072060-8-60 | |
| N-6-8 | 7P Socket Cover 1 | 1 | 218862-0-01 | | N-6-44-4 | Roter | 1 | | |
| N-6-9 | Screw | 2 | 008400-8-06 | | N-6-44-5 | Roter Push Plate | 1 | 218910-0-00 | |
| N-6-10 | Screw | 1 | 002401-0-63 | | N-6-44-6 | Screw | 3 | 215080-0-01 | |
| N-6-11 | Washer | 1 | 028040-2-43 | | N-6-44-7 | 3P Plug | 1 | 216299-0-01 | |
| N-6-12 | Nut | 1 | 025040-1-73 | | N-6-44-8 | Plug Set Plate | 1 | 216300-0-01 | |
| N-6-13 | Screw | 1 | 013080-8-13 | | N-6-44-9 | Screw | 1 | 216286-0-01 | |
| N-6-14 | Vinyl Cap for Lead Wire | 2 | 218951-0-01 | | N-6-44-10 | Sub Motor Frame #55 | 1 | 218911-0-01 | |
| N-6-15 | Lead Wire (White) | | 218861-0-01 | | N-6-44-11 | Screw | 1 | 012061-8-22 | |
| N-6-16 | Lead Wire for Earth | 1 | | | N-6-44-12 | Nut | 1 | 021060-3-05 | N-6-44 Sub Motor Assembly |
| N-6-17 | Lead Wire (Red) | 1 | 218861-0-02 | N-6 Motor Assembly | N-6-44-13 | Stator | 1 | | |
| N-6-18 | Lead Wire (Black) | 1 | 218861-0-03 | | N-6-44-14 | Insulator Paper | 2 | 216284-0-00 | |
| N-6-19 | Screw | 1 | 011060-6-13 | | N-6-44-15 | Screw | 3 | 211528-0-01 | |
| N-6-20 | Frame #54 | 1 | 218831-0-01 | | N-6-44-16 | Bracket | 1 | 218912-0-00 | |
| N-6-21 | Base | 1 | 218874-0-01 | | N-6-44-17 | Collar | 1 | 218922-0-01 | |
| N-6-22 | Pin | 1 | 218875-0-01 | | N-6-44-18 | Clutch Plate | 1 | 218916-0-01 | |
| N-6-23 | Washer | 1 | 213765-0-01 | | N-6-44-19 | Washer | 1 | 218921-0-01 | |
| N-6-24 | Bolt Adjusting Rod | 1 | 210965-0-01 | | N-6-44-20 | Selation | 1 | 217280-0-01 | |
| N-6-25 | Washer | 3 | 213752-0-01 | | N-6-44-21 | Round Plate | 1 | 218918-0-01 | |
| N-6-26 | Spring Washer | 6 | 028050-2-43 | | N-6-44-22 | Spring | 1 | 218919-0-01 | |
| N-6-27 | Screw | 3 | 218905-0-01 | | N-6-44-23 | Washer | 1 | 218920-0-00 | |
| N-6-28 | Nut | 2 | 021100-2-06 | | N-6-45 | Screw | 1 | 002500-8-06 | |
| N-6-29 | Washer | 2 | 025100-2-36 | | N-6-46 | Spring Washer | 1 | 028050-2-43 | |
| N-6-30 | Washer | 1 | 028100-2-43 | | N-6-47 | Cord Holder | 1 | 218866-0-01 | |
| N-6-31 | Key | 1 | 210940-0-00 | | N-6-48 | Plug for Sub Motor | 1 | 218867-0-01 | |
| N-6-32 | Rubber Washer 708 X 35 X 46RU | 1 | 210938-0-01 | | N-6-49 | Rubber Pad #71 | 1 | 218864-0-01 | |
| N-6-33 | Bearing 6203 VV | 2 | 072620-3-60 | | N-6-50 | Crimp Connector | 3 | 217169-0-00 | |
| N-6-34 | Stator | 1 | | | | | | | |

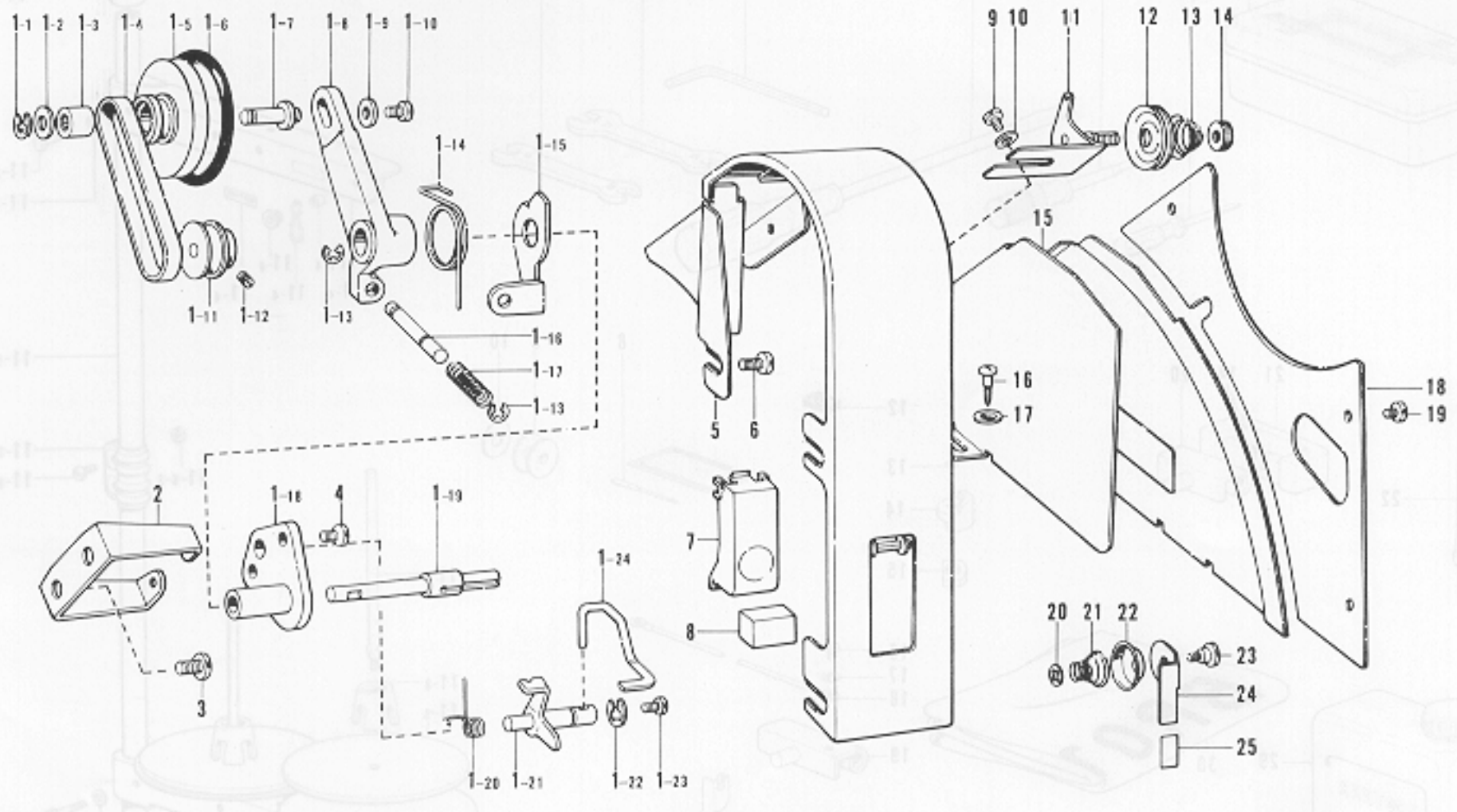
N. Motor (Part 2)



| Ref. No. | Name of Parts | Q'ty | Parts No. | Assembly No. | Ref. No. | Name of Parts | Q'ty | Parts No. | Assembly No. |
|----------|--------------------------------------|------|-------------|---|--------------------------------|-----------------|-------------|-------------|---|
| N-6-51-1 | Nut | 1 | 210942-0-02 | N-6-51 Clutch Plate #8 Assembly 218877-0-01 | N-6-86 | Bearing 6201 VV | 1 | 072620-1-61 | N-6-98 Clutch Lever #8 Assembly 218923-0-01 |
| N-6-51-2 | Washer | 1 | 210941-0-02 | | N-6-87 | Washer | 1 | 216277-0-01 | |
| N-6-51-3 | Clutch Plate #6 | 1 | 213750-0-00 | | N-6-88 | Clutch Solenoid | 1 | 218903-0-01 | |
| N-6-51-4 | Bearing 620 VV | 2 | 072620-2-60 | | N-6-89 | Screw | 2 | 002503-5-05 | |
| N-6-51-5 | Washer | 1 | 210948-0-01 | | N-6-90 | Vinyl Tube | 1 | 216837-0-01 | |
| N-6-51-6 | Key | 2 | 210421-0-00 | | N-6-91 | Plug Cover | 1 | 216248-0-01 | |
| N-6-51-7 | Clutch Shaft | 1 | 218878-0-00 | | N-6-92 | 4P Plug | 1 | 216247-0-01 | |
| N-6-51-8 | Clutch Shaft Supporter | 1 | 218879-0-01 | | N-6-93 | Nut | 1 | 206337-0-02 | |
| N-6-52 | Brake Lining | 1 | 218882-0-00 | N-6-94 | Spring Cap | 1 | 213760-0-01 | | |
| N-6-53 | Supporter for Clutch Shaft Supporter | 1 | 290439-0-00 | N-6-95 | Spring | 1 | 218929-0-01 | | |
| N-6-54 | Gear 1/2 | 1 | 216219-0-00 | N-6-96 | Pedal Pressure Adjusting Screw | 1 | 218928-0-01 | | |
| N-6-55 | Washer | 4 | 025050-1-35 | N-6-97 | Screw | 1 | 014061-0-22 | | |
| N-6-56 | Washer | 9 | 028050-2-43 | N-6-98-1 | Bail Screw | 1 | 216225-0-01 | | |
| N-6-57 | Screw | 4 | 018502-5-22 | N-6-98-2 | Nut | 1 | 218921-0-01 | | |
| N-6-58 | Screw | 4 | 215080-0-01 | N-6-98-3 | Clutch Lever | 1 | 218924-0-01 | | |
| N-6-59 | Brake Cover | 1 | 218902-0-01 | N-6-98-4 | Spring Cap | 1 | 216233-0-01 | | |
| N-6-60 | Bolt | 1 | 018401-4-22 | N-6-98-5 | Spring | 1 | 218945-0-01 | | |
| N-6-61 | Spring Washer | 1 | 028040-2-43 | N-6-98-6 | Washer | 1 | 216235-0-00 | | |
| N-6-62 | Washer | 1 | 218896-0-00 | N-6-98-7 | Clutch Lever Bottom Plate | 1 | 218946-0-01 | | |
| N-6-63 | Spacer | 4 | 218860-0-01 | N-6-98-8 | Switch Presser Plate | 2 | 216241-0-01 | | |
| N-6-64 | Brake Disc | 1 | 218895-0-01 | N-6-98-9 | Nut | 6 | 021060-3-05 | | |
| N-6-65 | Selation | 1 | 217280-0-01 | N-6-98-10 | Bolt | 3 | 213913-0-01 | | |
| N-6-66 | Washer | 1 | 218894-0-01 | N-6-98-11 | Screw | 8 | 215080-0-01 | | |
| N-6-67 | Spring | 1 | 218893-0-01 | N-6-98-12 | Screw | 2 | 012061-2-22 | | |
| N-6-68 | Screw | 2 | 002501-6-05 | N-6-98-13 | Spring Washer | 2 | 028040-2-43 | | |
| N-6-69 | Brake Solenoid | 1 | 218915-0-01 | N-6-98-14 | Screw | 2 | 002400-6-05 | | |
| N-6-70 | Bearing 608 VV | 1 | 072060-8-60 | N-6-98-15 | Washer | 1 | 025040-3-35 | | |
| N-6-71 | Cord Holder | 1 | 218930-0-01 | N-6-98-16 | Pin | 1 | 218926-0-01 | | |
| N-6-72 | Bracket | 1 | 218876-0-01 | N-6-98-17 | Bolt | 1 | 216232-0-01 | | |
| N-6-73 | Nut | 2 | 021060-3-05 | N-6-98-18 | Washer | 1 | 028060-2-43 | | |
| N-6-74 | Space Adjusting Plate | 1 | 218881-0-01 | N-6-98-19 | Bolt | 1 | 214002-0-01 | | |
| N-6-75 | Bolt | 1 | 219405-0-01 | N-6-98-20 | Clutch Lever Cover | 1 | 218925-0-01 | | |
| N-6-76 | Bolt | 1 | 018502-2-23 | N-6-98-21 | Spring Cap | 1 | 218927-0-01 | | |
| N-6-77 | Nut | 1 | 210240-0-01 | N-6-98-22 | Spring | 1 | 216230-0-01 | | |
| N-6-78 | Screw | 2 | 211528-0-01 | N-6-98-23 | Micro Key Cord | 1 | 218947-0-01 | | |
| N-6-79 | Belt Cover Set Plate | 1 | 216380-0-01 | N-6-98-24 | Micro Switch | 2 | 216236-0-01 | | |
| N-6-80 | Pin | 1 | 213757-0-02 | N-6-98-25 | Bushing | 1 | 212544-0-01 | | |
| N-6-81 | Spring Pin | 1 | 218952-0-01 | N-6-98-26 | Washer | 4 | 025040-1-35 | | |
| N-6-82 | Clutch Plate #2 | 1 | 218885-0-01 | N-7 | Pulley | 1 | | | |
| N-6-83 | Washer | 1 | 218891-0-01 | N-8 | Belt Cover | 1 | 215491-0-01 | | |
| N-6-84 | Screw | 1 | 218892-0-01 | N-9 | Washer | 2 | 025050-3-35 | | |
| N-6-85 | Worm 1/2 | 1 | 218884-0-00 | N-10 | Screw | 2 | 211528-0-01 | | |

From the library of: Diamond Needle Corp

U. Bobbin Winder Mechanism

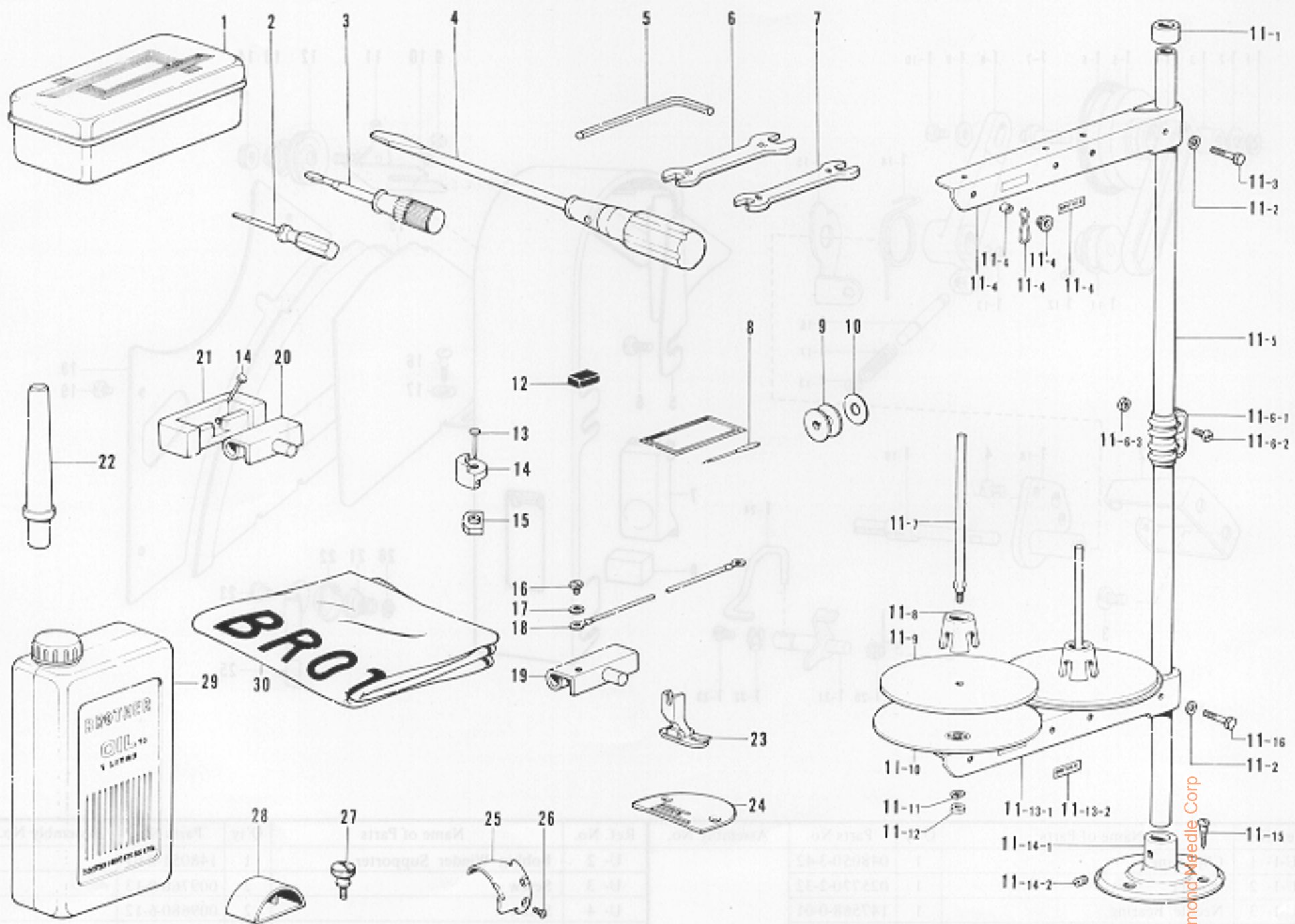


| Ref. No. | Name of Parts | Q'ty | Parts No. | Assembly No. | Ref. No. | Name of Parts | Q'ty | Parts No. | Assembly No. |
|----------|--|------|-------------|---|----------|--------------------------------------|------|-------------|--------------|
| U-1- 1 | Clip Ring | 1 | 048050-3-42 | U-1 Bobbin Winder Assembly 147549-0-01 | U- 2 | Bobbin Winder Supporter | 1 | 148051-0-01 | |
| U-1- 2 | Washer | 1 | 025770-2-32 | | U- 3 | Screw | 2 | 009760-8-13 | |
| U-1- 3 | Needle Bearing | 1 | 147568-0-01 | | U- 4 | Screw | 2 | 009680-6-12 | |
| U-1- 4 | V Belt | 1 | 145684-0-01 | | U- 5 | Belt Cover Assembly | 1 | 145567-0-01 | |
| U-1- 5 | Bobbin Winder Driving Pulley | 1 | 148050-0-90 | | U- 6 | Screw | 3 | 009760-8-13 | |
| U-1- 6 | Rubber Ring | 1 | 145558-0-01 | | U- 7 | Push Button | 1 | 145682-0-01 | |
| U-1- 7 | Bobbin Winder Driving Pulley Stud | 1 | 148049-0-01 | | U- 8 | Cushion | 1 | 151608-0-01 | |
| U-1- 8 | Bobbin Winder Driving Pulley Supporter | 1 | 148044-0-01 | | U- 9 | Screw | 1 | 001670-6-12 | |
| U-1- 9 | Washer | 1 | 025350-3-32 | | U-10 | Washer | 2 | 025350-5-32 | |
| U-1-10 | Screw | 1 | 009670-6-12 | | U-11 | Bobbin Winder Guide Bracket Assembly | 1 | 145571-0-01 | |
| U-1-11 | Bobbin Winder Belt Wheel | 1 | 148048-0-01 | | U-12 | Tension Disc | 2 | 145446-0-01 | |
| U-1-12 | Screw | 2 | 013670-7-12 | | U-13 | Tension Spring | 1 | 100401-0-01 | |
| U-1-13 | Stop Ring | 2 | 048030-3-42 | | U-14 | Nut | 1 | 100136-0-01 | |
| U-1-14 | Return Spring | 1 | 148045-0-01 | | U-15 | Belt Cover Lower | 1 | 145570-0-01 | |
| U-1-15 | Bobbin Winder Presser Plate | 1 | 147538-0-01 | | U-16 | Screw | 2 | 100666-0-02 | |
| U-1-16 | Bobbin Winder Button Stud | 1 | 147540-0-01 | | U-17 | Washer | 2 | 025750-1-32 | |
| U-1-17 | Spring | 1 | 147539-0-01 | | U-18 | Belt Cover Lid | 1 | 147548-0-01 | |
| U-1-18 | Bobbin Winder Bracket | 1 | 148043-0-01 | | U-19 | Screw | 2 | 009680-5-12 | |
| U-1-19 | Bobbin Winder Shaft | 1 | 148047-0-01 | | U-20 | Stop Ring | 1 | 146200-0-01 | |
| U-1-20 | Cam Stud Spring | 1 | 148046-0-01 | | U-21 | Spring | 1 | 144505-0-00 | |
| U-1-21 | Cam Shaft | 1 | 147542-0-01 | | U-22 | Disc | 1 | 146199-0-01 | |
| U-1-22 | Clip Ring | 1 | 048050-3-42 | | U-23 | Screw | 1 | 118764-0-02 | |
| U-1-23 | Screw | 1 | 009670-6-12 | | U-24 | Knife | 1 | 146198-0-01 | |
| U-1-24 | Bobbin Presser | 1 | 147547-0-01 | | U-25 | Cushion | 1 | 146289-0-01 | |

| | | | | | |
|-------------|--------------------|------|-------------|--------------------|------|
| 142608-0-01 | Head Cover | N-30 | 142608-0-01 | Head Cover | N-30 |
| 142612-0-01 | Oil Tank | N-30 | 142612-0-01 | Oil Tank | N-30 |
| 108130-0-01 | Novelty Knife Case | N-38 | 108130-0-01 | Novelty Knife Case | N-38 |
| 142990-0-01 | Tramp Screw | N-37 | 142990-0-01 | Tramp Screw | N-37 |
| 142990-0-01 | Screw | N-36 | 142990-0-01 | Screw | N-36 |
| 142990-0-01 | Novelty Knife | N-35 | 142990-0-01 | Novelty Knife | N-35 |
| 142990-0-01 | Novelty Knife | N-34 | 142990-0-01 | Novelty Knife | N-34 |
| 142990-0-01 | Novelty Knife | N-33 | 142990-0-01 | Novelty Knife | N-33 |
| 142990-0-01 | Novelty Knife | N-32 | 142990-0-01 | Novelty Knife | N-32 |
| 142990-0-01 | Novelty Knife | N-31 | 142990-0-01 | Novelty Knife | N-31 |
| 142990-0-01 | Novelty Knife | N-30 | 142990-0-01 | Novelty Knife | N-30 |

*The details of included accessories are subject to change.
 *Änderungen in der Ausstattung der mitgelieferten Zubehör sind vorbehalten.
 *Les détails des accessoires inclus sont sujets à des changements.
 *Los detalles de los accesorios incluidos pueden variar.

Z. Accessories



| Ref. No. | Name of Parts | Q'ty | Parts No. | Assembly No. | Ref. No. | Name of Parts | Q'ty | Parts No. | Assembly No. |
|-----------|------------------------|------|-------------|---|-----------|-----------------------|------|-------------|---|
| Z- 1 | Accessory Box | | 110436-0-01 | | Z-11-13 | Spool Holder Assembly | | 150177-0-01 | |
| Z- 2 | Screw Driver | | 142443-0-01 | | Z-11-14-1 | Cotton Stand Base | | 150189-0-01 | Z-11-14 Cotton Stand Base Assembly 150139-0-01 |
| Z- 3 | Screw Driver | | 118837-0-01 | | Z-11-14-2 | Screw | | 150181-0-01 | |
| Z- 4 | Screw Driver | | 101572-1-01 | | Z-11-15 | Screw | | 031452-2-03 | |
| Z- 5 | Spanner | | 146049-0-01 | | Z-11-16 | Bolt | | 017502-8-03 | |
| Z- 6 | Spanner 10 X 12 | | 107780-0-01 | | Z-12 | Magnet | | 112525-0-00 | |
| Z- 7 | Spanner 8 X 9 | | 100887-0-01 | | Z-13 | Nail | | 109714-0-00 | |
| Z- 8 | Needle | | | | Z-14 | Head Cushion | | 146003-1-01 | |
| Z- 9 | Bobbin | | 100376-0-01 | | Z-15 | Oil Pan Cushion | | 146004-0-01 | |
| Z-10 | Bobbin Case Sheet | | 140356-0-01 | | Z-16 | Screw | | 009680-6-13 | |
| Z-11- 1 | Cap | | | | Z-17 | Washer | | 025680-2-34 | |
| Z-11- 2 | Washer | | 025050-2-33 | | Z-18 | Earth Wire | | 145946-0-01 | |
| Z-11- 3 | Bolt | | 017502-8-03 | | Z-19 | Head Hinge | | 145945-0-01 | |
| Z-11- 4 | Thread Hanger Assembly | | 150192-0-01 | | Z-20 | Hinge | | 143882-0-01 | |
| Z-11- 5 | Pipe | | 150172-0-01 | | Z-21 | Rubber Hinge | | 143910-0-01 | |
| Z-11- 6-1 | Joint | | 150173-0-01 | Z-11-6 Joint Assembly 150106-0-01 | Z-22 | Head Rest | | 100477-0-01 | |
| Z-11- 6-2 | Screw | | 150202-0-01 | | Z-23 | Presser Foot | | 140957-0-01 | |
| Z-11- 6-3 | Nut | | 021500-1-03 | | Z-24 | Needle Plate | | 100266-0-01 | |
| Z-11- 7 | Spool Shaft | | 150179-0-01 | Z-11 Cotton Stand Assembly 150150-0-01 | Z-25 | Movable Knife | | 145608-0-01 | |
| Z-11- 8 | Spool Cushion | | 147060-0-01 | | Z-26 | Screw | | 141542-0-01 | |
| Z-11- 9 | Spool Mat | | 150182-0-00 | | Z-27 | Thumb Screw | | 106120-0-01 | |
| Z-11-10 | Spool Stand Base | | 150180-0-00 | | Z-28 | Movable Knife Case | | 145990-0-01 | |
| Z-11-11 | Spring Washer | | 028050-2-43 | | Z-29 | Oil Tank | | 145277-1-03 | |
| Z-11-12 | Nut | | 021500-1-03 | | Z-30 | Head Cover | | 144222-0-01 | |

*The details of included accessories are subject to change.

*Änderungen in der Aufstellung der mitgelieferten Zubehöre sind vorbehalten.

*Les détails des accessoires inclus sont sujets à des changements.

*Los detalles de los accesorios incluidos pueden variar.

DIFFERENT PARTS LIST

| Ref. No. | Name of Parts | Sub-Class Motor Spec. | -103 | | -105 | | -203 | | -205 | |
|----------|-------------------------------------|--------------------------|-------------|-------------|-------------|-------------|-------------|-------------|-------------|-------------|
| | | | Brother | Efka | Brother | Efka | Brother | Efka | Brother | Efka |
| A-4 | Face Plate | | 145523-0-01 | | | | 146078-0-01 | | | |
| A-37 | Tension Regulator Assembly | | 181634-0-01 | | 181635-0-01 | | 181634-0-01 | | 181635-0-01 | |
| A-37-8 | Tension Spring | | 145520-0-01 | | 145153-0-01 | | 145520-0-01 | | 145153-0-01 | |
| B-1 | Needle DB x 1 | | 100265-0-34 | | 100265-0-42 | | 100265-0-34 | | 100265-0-42 | |
| B-5 | Needle Bar Bushing | | 145468-0-01 | | 146311-0-01 | | 145468-0-01 | | 146311-0-01 | |
| B-8 | Thread Take-up Lever Assembly | | 147551-0-01 | | 149313-0-01 | | 147551-0-01 | | 149313-0-01 | |
| B-10 | Needle Bar | | 111462-0-01 | | 145986-0-01 | | 111462-0-01 | | 145986-0-01 | |
| B-11 | Block for Needle Bar Guide | | 102630-0-01 | | 146366-0-01 | | 102630-0-01 | | 146366-0-01 | |
| B-52 | Rotary Hook Assembly | | 145585-1-01 | | 148846-0-01 | | 145585-1-01 | | 148846-0-01 | |
| B-54 | Bobbin Case Holder Position Bracket | | 100367-0-01 | | 147337-0-01 | | 100367-0-01 | | 147337-0-01 | |
| B-61 | Needle Plate Washer | | 146188-0-01 | | 146251-0-01 | | 146188-0-01 | | 146251-0-01 | |
| B-62 | Needle Plate | | 145971-0-01 | | 147245-0-01 | | 145971-0-01 | | 147245-0-01 | |
| C-10 | Length Control Assembly | | 181632-1-01 | | 181482-1-01 | | 181632-1-01 | | 181482-1-01 | |
| C-10-4 | Length Control Plate | | 151508-0-01 | | 151507-0-01 | | 151508-0-01 | | 151507-0-01 | |
| C-15 | Screw | | | | 100511-0-03 | | | | | |
| C-16 | Reverse Lever | | | | 147503-0-01 | | | | | |
| C-17 | Screw Lever Plate | | 009711-4-12 | | | | 009711-4-12 | | | |
| C-19 | Reverse | | | | 147504-0-01 | | | | | |
| C-23 | Reverse Lever Shaft | | | | 147505-0-01 | | | | | |
| C-25 | Spring | | | | 150757-0-01 | | | | | |
| C-26 | Reverse Lever Stopper | | | | | | | | | |
| C-27 | Reverse Lever Presser Spring | | | | | | | | | |
| C-28 | Collar | | | | | | | | | |
| C-29 | Reverse Lever | | | | | | | | | |
| C-30 | Washer | | | | | | | | | |
| C-31 | Screw | | | | | | | | | |
| C-32 | Reverse Lever Shaft | | | | | | | | | |
| C-39 | Feed Dog | | 100334-0-01 | | 144500-0-01 | | 100334-0-01 | | 144500-0-01 | |
| D-1 | Presser Foot | | 113280-0-01 | | 145157-0-01 | | 113280-0-01 | | 145157-0-01 | |
| D-17 | Tension Releaser | | | | 145689-0-01 | | | | | |
| D-22 | Spring | | | | 145475-1-01 | | | | | |
| D-30 | Knee Lifter Assembly | | | | 181427-0-01 | | | | | |
| E-30 | Oil Pan Assembly | | | | 181420-2-01 | | | | | |
| E-30-4 | Oil Pan | | | | 149580-0-01 | | | | | |
| E-30-11 | Spring | | | | 146038-0-01 | | | | | |
| E-30-12 | Knee Lifter Shaft | | | | 146036-1-01 | | | | | |
| E-30-14 | Spring | | | | | | | | | |
| F-17 | Solenoid Bracket Assembly | | 150375-0-01 | 152187-0-01 | 150375-0-01 | 152187-0-01 | 150375-0-01 | 152187-0-01 | 150375-0-01 | 152187-0-01 |
| F-17-5 | Thread Trimming Solenoid Assembly | | 149108-0-01 | 152188-0-01 | 149108-0-01 | 152188-0-01 | 149108-0-01 | 152188-0-01 | 149108-0-01 | 152188-0-01 |
| F-17-5-3 | Terminal Pin | | 143549-0-00 | | 143549-0-00 | | 143549-0-00 | | 143549-0-00 | |
| F-22 | Connector Cap | | 145596-0-01 | | 145596-0-01 | | 145596-0-01 | | 145596-0-01 | |
| F-23 | Nylon Connector | | 145681-0-00 | | 145681-0-00 | | 145681-0-00 | | 145681-0-00 | |
| F-33 | Spacer | | 145611-0-00 | | 146187-0-00 | | 145611-0-00 | | 146187-0-00 | |
| G-2 | Synchronizer Assembly | | 218931-0-01 | | 218931-0-01 | | 218931-0-01 | | 218931-0-01 | |
| G-6 | Slip Ring Support | | | 148825-0-01 | | 148825-0-01 | | 148825-0-01 | | 148825-0-01 |
| H-5 | Cord | | 146095-0-00 | 151183-0-01 | 146095-0-00 | 151183-0-01 | 146095-0-01 | 151183-0-01 | 146095-0-00 | 151183-0-01 |
| H-5-4 | Terminal Pin | | 143549-0-00 | | 143549-0-00 | | 143549-0-00 | | 143549-0-00 | |
| H-23 | Supporter | | | | | | 140647-0-01 | | | |
| H-24 | Tube Holder | | | | | | | | | |
| H-29 | Switch | | | | | | | | | |
| H-29-2 | Terminal Pin | | | | | | | | | |
| J-3 | Reverse Solenoid | | | | | | | | | |
| J-3-5 | Terminal Pin | | | | | | | | | |
| J-9 | Connector Cap | | | | | | | | | |
| J-10 | 6P Connector | | | | | | | | | |
| L-1 | Air Control Box | | | | | | | | | |
| L-2 | Presser Foot Lifter Cord Assembly | | | | | | | | | |
| L-3 | Screw | | | | | | | | | |
| L-4 | Washer | | | | | | | | | |
| L-5 | Washer | | | | | | | | | |
| L-6 | Nut | | | | | | | | | |
| L-7 | Bead Band | | | | | | | | | |
| L-8 | Screw | | | | | | | | | |
| L-9 | Cushion Rubber | | | | | | | | | |
| Z-8 | Needle DB x 1 | | 100265-0-34 | | 100265-0-42 | | 100265-0-34 | | 100265-0-42 | |

From the library of: Diamond Needle Corp

| Ref. No. | Name of Parts | Sub-Class Motor Spec. | -403 | | -405 | | -503 | | -505 | |
|----------|-------------------------------------|--------------------------|-------------|-------------|-------------|-------------|-------------|-------------|-------------|-------------|
| | | | Brother | Efka | Brother | Efka | Brother | Efka | Brother | Efka |
| A- 4 | Face Plate | | 146078-0-01 | | | | | | | |
| A-37 | Tension Regulator Assembly | | 181634-0-01 | | 181635-0-01 | | 181634-0-01 | | 181635-0-01 | |
| A-37- 8 | Tension Spring | | 145520-0-01 | | 145153-0-01 | | 145520-0-01 | | 145153-0-01 | |
| B- 1 | Needle DB x 1 | | 100265-0-34 | | 100265-0-42 | | 100265-0-34 | | 100265-0-42 | |
| B- 5 | Needle Bar Bushing | | 145468-0-01 | | 146311-0-01 | | 145468-0-01 | | 146311-0-01 | |
| B- 8 | Thread Take-up Lever Assembly | | 147551-0-01 | | 149313-0-01 | | 147551-0-01 | | 149313-0-01 | |
| B-10 | Needle Bar | | 111462-0-01 | | 145986-0-01 | | 111462-0-01 | | 145986-0-01 | |
| B-11 | Block for Needle Bar Guide | | 102630-0-01 | | 146366-0-01 | | 102630-0-01 | | 146366-0-01 | |
| B-52 | Rotary Hook Assembly | | 145585-1-01 | | 148846-0-01 | | 145585-1-01 | | 148846-0-01 | |
| B-54 | Bobbin Case Holder Position Bracket | | 100367-0-01 | | 147337-0-01 | | 100367-0-01 | | 147337-0-01 | |
| B-61 | Needle Plate Washer | | 146188-0-01 | | 146251-0-01 | | 146188-0-01 | | 146251-0-01 | |
| B-62 | Needle Plate | | 145971-0-01 | | 147245-0-01 | | 145971-0-01 | | 147245-0-01 | |
| C-10 | Length Control Assembly | | 181632-1-01 | | 181482-1-01 | | 181632-1-01 | | 181482-1-01 | |
| C-10- 4 | Length Control Plate | | 151508-0-01 | | 151507-0-01 | | 151508-0-01 | | 151507-0-01 | |
| C-15 | Screw | | | | | | | | | |
| C-16 | Reverse Lever | | | | | | | | | |
| C-17 | Screw Lever Plate | | | | | | | | | |
| C-19 | Reverse | | | | | | | | | |
| C-23 | Reverse Lever Shaft | | | | | | | | | |
| C-25 | Spring | | | 147598-0-01 | | | | 150757-0-01 | | |
| C-26 | Reverse Lever Stopper | | | | | | 149083-0-01 | | | |
| C-27 | Reverse Lever Presser Spring | | | | | | 149088-0-01 | | | |
| C-28 | Collar | | | | | | 149087-0-01 | | | |
| C-29 | Reverse Lever | | | | | | 149086-0-01 | | | |
| C-30 | Washer | | | | | | 116662-0-03 | | | |
| C-31 | Screw | | | | | | 009710-8-12 | | | |
| C-32 | Reverse Lever Shaft | | | | | | 149085-0-01 | | | |
| C-39 | Feed Dog | | 100334-0-01 | | 144500-0-01 | | 100334-0-01 | | 144500-0-01 | |
| D- 1 | Presser Foot | | 113280-0-01 | | 145157-0-01 | | 113280-0-01 | | 145157-0-01 | |
| D-17 | Tension Releaser | | | 145689-0-01 | | | | 147198-0-01 | | |
| D-22 | Spring | | | 145475-1-01 | | | | 147197-0-01 | | |
| D-30 | Knee Lifter Assembly | | | 181427-0-01 | | | | | | |
| E-30 | Oil Pan Assembly | | | 181420-2-01 | | | | 181430-2-01 | | |
| E-30- 4 | Oil Pan | | | 149580-0-01 | | | | 149581-0-01 | | |
| E-30-11 | Spring | | | 146038-0-01 | | | | | | |
| E-30-12 | Knee Lifter Shaft | | | 146036-1-01 | | | | 146069-0-01 | | |
| E-30-14 | Spring | | | | | | | 146985-0-01 | | |
| F-17 | Solenoid Bracket Assembly | | 150375-0-01 | 152187-0-01 | 150375-0-01 | 152187-0-01 | 150375-0-01 | 152187-0-01 | 150375-0-01 | 152187-0-01 |
| F-17- 5 | Thread Trimming Solenoid Assembly | | 149108-0-01 | 152188-0-01 | 149108-0-01 | 152188-0-01 | 149108-0-01 | 152188-0-01 | 149108-0-01 | 152188-0-01 |
| F-17-5-3 | Terminal Pin | | 143549-0-00 | | 143549-0-00 | | 143549-0-00 | | 143549-0-00 | |
| F-22 | Connector Cap | | 145596-0-01 | | 145596-0-01 | | 145596-0-01 | | 145596-0-01 | |
| F-23 | Nylon Connector | | 145681-0-00 | | 145681-0-00 | | 145681-0-00 | | 145681-0-00 | |
| F-33 | Spacer | | 145611-0-00 | | 146187-0-00 | | 145611-0-00 | | 146187-0-00 | |
| G- 2 | Synchronizer Assembly | | 218931-0-1 | | 218931-0-01 | | 218931-0-01 | | 218931-0-01 | |
| G- 6 | Slip Ring Support | | | 148825-0-01 | | 148825-0-01 | | 148825-0-01 | | 148825-0-01 |
| H- 5 | Cord | | 146095-0-00 | 151183-0-01 | 146095-0-00 | 151183-0-01 | 146095-0-00 | 151183-0-01 | 146095-0-00 | 151183-0-01 |
| H- 5- 4 | Terminal Pin | | 143549-0-00 | | 143549-0-00 | | 143549-0-00 | | 143549-0-00 | |
| H-23 | Supporter | | | | | | | | | |
| H-24 | Tube Holder | | | | | | | 142268-0-01 | | |
| H-29 | Switch | | 146121-0-00 | 151185-0-01 | 146121-0-00 | 151185-0-01 | 146121-0-00 | 151185-0-01 | 146121-0-00 | 151185-0-01 |
| H-29- 2 | Terminal Pin | | 143549-0-00 | | 143549-0-00 | | 143549-0-00 | | 143549-0-00 | |
| J - 3 | Reverse Solenoid | | 147756-0-01 | 151181-0-01 | 147756-0-01 | 151181-0-01 | 147756-0-01 | 151181-0-01 | 147756-0-01 | 151181-0-01 |
| J - 3- 5 | Terminal Pin | | 143549-0-00 | | 143549-0-00 | | 143549-0-00 | | 143549-0-00 | |
| J - 9 | Connector Cap | | 145596-0-01 | | 145596-0-01 | | 145596-0-01 | | 145596-0-01 | |
| J -10 | 6P Connector | | 146118-0-00 | | 146118-0-00 | | 146118-0-00 | | 146118-0-00 | |
| L- 1 | Air Control Box | | | | | | 149539-0-01 | | 149539-0-01 | |
| L- 2 | Presser Foot Lifter Cord Assembly | | | | | | 146160-0-01 | | 146160-0-01 | |
| L- 3 | Screw | | | | | | 002303-0-06 | | 002303-0-06 | |
| L- 4 | Washer | | | | | | 025030-2-33 | | 025030-2-33 | |
| L- 5 | Washer | | | | | | 028030-2-43 | | 028030-2-43 | |
| L- 6 | Nut | | | | | | 021300-1-03 | | 021300-1-03 | |
| L- 7 | Bead Band | | | | | | 144189-0-01 | | 144189-0-01 | |
| L- 8 | Screw | | | | | | 031483-2-03 | | 031483-2-03 | |
| L- 9 | Cushion Rubber | | | | | | 115018-0-01 | | 115018-0-01 | |
| Z- 8 | Needle DB x 1 | | 100265-0-34 | | 100265-0-42 | | 100265-0-34 | | 100265-0-42 | |

From the library of: Diamond Needle Corp

| Ref.No. | Name of Parts | Phase Volt | 3 Phase | | | | 1 Phase | | | |
|------------|--------------------------|---------------|-------------|-------------|-------------|---------------------------|-------------|-------------|-------------|---------------------------|
| | | | 220V | 380V | 400V | 400V (Lamp tap 12V) | 110V | 220V | 240V | 240V (Lamp tap 12V) |
| M-1 | Control Box Assembly | 200 | 220970-0-01 | 220966-0-01 | 220965-0-01 | 220971-0-01 | | 220972-0-01 | | |
| | | 400 | | | | | 220974-0-01 | 221051-0-01 | | |
| | | 500 | 220967-0-01 | 220968-0-01 | 220969-0-01 | 220975-0-01 | 220976-0-01 | 220977-0-01 | | |
| M-1- 4 | Tranformer | 219749-0-00 | 219501-0-00 | 219505-0-00 | 220001-0-00 | 219749-0-00 | 219744-0-00 | | | |
| M-1- 9 | Condenser Set Plate | | | | | | 219746-0-01 | | | |
| M-1-10 | Screw | | | | | | 215080-0-01 | | | |
| M-1-11 | Condenser | | | | | 220010-0-01 | 219745-0-01 | | | |
| M-1-19 | Printed Circuit Board | 200/400 | | | | 219698-0-01 | | | | |
| | | 500 | | | | 220070-0-01 | | | | |
| M-1-20 | Printed Circuit Board | 200/500 | | | | 219752-0-01 | | | | |
| | | 400 | | | | 219699-0-01 | | | | |
| M-1-22 | Pilot Lamp | | 216364-0-00 | | | 217249-0-00 | 216364-0-00 | | | |
| N-6 | Motor Assembly | 219972-0-01 | 219497-0-01 | 219934-0-01 | 219507-0-01 | 219984-0-01 | 219733-0-01 | 219967-0-01 | 219726-0-01 | 219791-0-01 |
| N-6-34 | Stator | 219485-0-01 | 219483-0-00 | 219933-0-00 | 219484-0-00 | 219985-0-00 | 219734-0-00 | 219968-0-00 | 219728-0-00 | 219792-0-00 |
| N-6-35 | Roter | | 213802-0-01 | | | | 217805-0-01 | | | |
| N-6-39 | Fly Wheel | | 218872-0-01 | | | | 219729-0-01 | | | |
| N-6-44 | Sub Motor Assembly | 219973-0-01 | 219499-0-01 | 219509-0-01 | | 219986-0-01 | 219735-0-01 | 219730-0-01 | | |
| N-6-44- 4 | Roter | | 218907-0-01 | | | | 219235-0-01 | | | |
| N-6-44-13 | Stator | 219488-0-00 | 219486-0-00 | 219487-0-00 | | 219987-0-00 | 219736-0-00 | 219731-0-00 | | |
| N 6-16 | Lead Wire for Earth | | 213792-0-01 | | | | 213792-0-01 | | | |
| N-6-15Q'ty | Lead Wire (White) | | 2 | | | | 1 | | | |

From the library of: Diamond Needle Corp

| Ref. No. | Name of Parts | Parts No. | Sewing Speed | | | |
|----------|---------------|-------------|--------------|------------|------------|------------|
| | | | 50Hz | | 60Hz | |
| | | | High Speed | Slow Speed | High Speed | Slow Speed |
| N-7 | Pulley K- 75 | 216921-0-01 | | | 3550 | 165 |
| | Pulley K- 80 | 217135-0-01 | | | 3850 | 180 |
| | Pulley K- 85 | 216922-0-01 | 3400 | 160 | 4050 | 190 |
| | Pulley K- 90 | 216923-0-01 | 3650 | 170 | 4300 | 205 |
| | Pulley K- 95 | 217136-0-01 | 3850 | 180 | | |
| | Pulley K-100 | 216924-0-01 | 4050 | 190 | | |
| | Pulley K-105 | 216925-0-01 | 4250 | 200 | | |